

BLVRB Polyclonal Antibody

catalog number: E-AB-19616

Note: Centrifuge before opening to ensure complete recovery of vial contents.

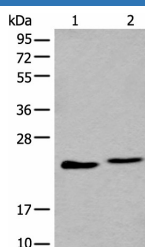
Description

Reactivity	Human;Mouse
Immunogen	Synthetic peptide of human BLVRB
Host	Rabbit
Isotype	IgG
Purification	Antigen affinity purification
Conjugation	Unconjugated
buffer	Phosphate buffered solution, pH 7.4, containing 0.05% stabilizer and 50% glycerol.

Applications

Applications	Recommended Dilution
WB	1:500-1:2000
IHC	1:40-1:200

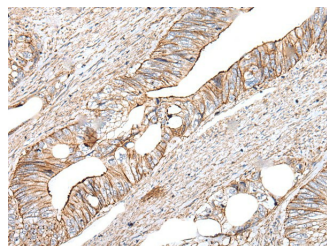
Data



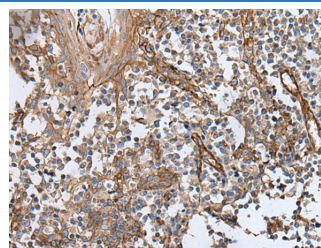
Western blot analysis of A549 and K562 cell lysate using BLVRB Polyclonal Antibody at dilution of 1:600

Observed-MV: Refer to figures

Calculated-MV: 22 kDa



Immunohistochemistry of paraffin-embedded Human colorectal cancer tissue using BLVRB Polyclonal Antibody at dilution of 1:65 (x200)



Immunohistochemistry of paraffin-embedded Human tonsil tissue using BLVRB Polyclonal Antibody at dilution of 1:65 (x200)

Preparation & Storage

Storage	Store at -20°C Valid for 12 months. Avoid freeze / thaw cycles.
Shipping	The product is shipped with ice pack, upon receipt, store it immediately at the temperature recommended.

Background

The final step in heme metabolism in mammals is catalyzed by the cytosolic biliverdin reductase enzymes A and B (EC 1.3.1.24).

For Research Use Only