

NCR1 Polyclonal Antibody

Catalog Number: E-AB-16312



Note: Centrifuge before opening to ensure complete recovery of vial contents.

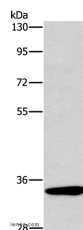
Description

| | |
|---------------------|---|
| Reactivity | Human |
| Immunogen | Synthetic peptide of human NCR1 |
| Host | Rabbit |
| Isotype | IgG |
| Purification | Affinity purification |
| Conjugation | Unconjugated |
| Formulation | PBS with 0.05% sodium azide and 50% glycerol, PH7.4 |

Applications Recommended Dilution

| | |
|-----------|--------------|
| WB | 1:200-1:1000 |
|-----------|--------------|

Data



Western Blot analysis of Mouse kidney tissue using NCR1 Polyclonal Antibody at dilution of 1:450
Calculated Mw:34kDa

Preparation & Storage

Storage Store at -20°C. Avoid freeze / thaw cycles.

Background

Natural cytotoxicity triggering receptor 1 is a protein that in humans is encoded by the NCR1 gene. NCR1 has also been designated as CD335 (cluster of differentiation 335). Cytotoxicity-activating receptor that may contribute to the increased efficiency of activated natural killer (NK) cells to mediate tumor cell lysis. Interacts with CD247 and FCER1G. Selectively expressed by both resting and activated NK cells.

For Research Use Only

A Reliable Research Partner in Life Science and Medicine

Toll-free: 1-888-852-8623

Web: www.elabscience.com

Tel: 1-832-243-6086

Email: techsupport@elabscience.com

Fax: 1-832-243-6017