

Recombinant Human Choriogonadotropin Subunit Beta 3/CGB3 Protein (His Tag)



Catalog Number:PKSH032251

Note: Centrifuge before opening to ensure complete recovery of vial contents.

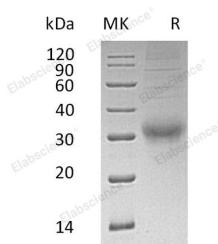
Description

Synonyms	Choriogonadotropin subunit beta;CG-beta;Chorionic gonadotrophin chain beta;CGB3;CGB
Species	Human
Expression Host	HEK293 Cells
Sequence	Ser21-Gln165
Accession	P0DN86
Calculated Molecular Weight	16.7 kDa
Observed molecular weight	28-35 kDa
Tag	C-His

Properties

Purity	> 95 % as determined by reducing SDS-PAGE.
Endotoxin	< 1.0 EU per µg of the protein as determined by the LAL method.
Storage	Generally, lyophilized proteins are stable for up to 12 months when stored at -20 to -80°C. Reconstituted protein solution can be stored at 4-8°C for 2-7 days. Aliquots of reconstituted samples are stable at < -20°C for 3 months.
Shipping	This product is provided as lyophilized powder which is shipped with ice packs.
Formulation	Lyophilized from a 0.2 µm filtered solution of 20mM PB, 150mM NaCl, pH 7.4. Normally 5 % - 8 % trehalose, mannitol and 0.01% Tween80 are added as protectants before lyophilization. Please refer to the specific buffer information in the printed man
Reconstitution	Please refer to the printed manual for detailed information.

Data



> 95 % as determined by reducing SDS-PAGE.

Background

Choriogonadotropin subunit beta is also known as CG-beta, Chorionic gonadotrophin chain beta. It is a protein that in humans is encoded by the CGB gene. It belongs to the glycoprotein hormones subunit beta family. Choriogonadotropin subunit beta can stimulates the ovaries to synthesize the steroids that are essential for the maintenance of pregnancy.

For Research Use Only

A Reliable Research Partner in Life Science and Medicine

Toll-free: 1-888-852-8623

Web: www.elabscience.com

Tel: 1-832-243-6086

Email: techsupport@elabscience.com

Fax: 1-832-243-6017