

## Recombinant Phospho-p90RSK (Thr359, Ser363) Monoclonal Antibody

catalog number: **AN300156L**

**Note:** Centrifuge before opening to ensure complete recovery of vial contents.

### Description

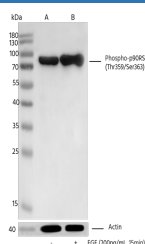
|                     |   |
|---------------------|---|
| <b>Reactivity</b>   | Human   |
| <b>Immunogen</b>    | A synthetic peptide corresponding to the residues around (Thr359, Ser363) of Human p90RSK |
| <b>Host</b>         | Rabbit  |
| <b>Isotype</b>      | IgG   |
| <b>Clone</b>        | 5B8   |
| <b>Purification</b> | Protein A   |
| <b>Buffer</b>       | 10 mM sodium HEPES, 150 mM NaCl, 100 µg/mL protein protectant, 50% glycerol, pH 7.5       |

### Applications

### Recommended Dilution

|           |                  |
|-----------|------------------|
| <b>WB</b> | 1:10000-1:100000 |
|-----------|------------------|

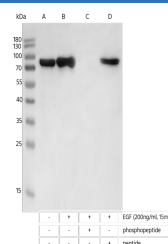
### Data



Western blot analysis of extracts from serum-starved A431, untreated(line A) or treated with EGF (Cat:PKSH031641) (200ng/mL, 15min; +)(line B), using Phospho-p90RSK (Thr359, Ser363) Monoclonal Antibody at 1:10000 dilution (upper) or Anti-Actin Antibody, Chimeric Rabbit Monoclonal at 1:50000 dilution (lower).

**Observed-MW:83 kDa**

**Calculated-MW:83 kDa**



Western blot analysis of extracts from serum-starved A431, untreated (line A); treated with EGF (Cat:PKSH031641) (200ng/mL, 15min), without peptide (line B) or antigen-specific phosphopeptide (line C) or antigen-specific peptide (line D) using Phospho-p90RSK (Thr359, Ser363) Monoclonal Antibody at 1:10000 dilution.

**Observed-MW:83 kDa**

**Calculated-MW:83 kDa**

### Preparation & Storage

|                 |  |
|-----------------|--|
| <b>Storage</b>  | This antibody can be stored at 2°C-8°C for one month without detectable loss of activity. Antibody products are stable for twelve months from date of receipt when stored at -20°C to -80°C. Preservative-Free. Avoid repeated freeze-thaw cycles. |
| <b>Shipping</b> | Ice bag  |

### Background

This gene encodes a member of the RSK (ribosomal S6 kinase) family of serine/threonine kinases. This kinase contains 1 nonidentical kinase catalytic domains and phosphorylates various substrates, including members of the mitogen-activated kinase (MAPK) signalling pathway. The activity of this protein has been implicated in controlling cell growth and differentiation. Alternate transcriptional splice variants, encoding different isoforms, have been characterized.

### For Research Use Only