

PE Anti-Mouse FcεRIα Antibody[MAR-1]

Catalog Number: E-AB-F1188UD

Note: Centrifuge before opening to ensure complete recovery of vial contents.

Description

Reactivity	Mouse
Host	Armenian Hamster
Isotype	Armenian Hamster IgG
Clone No.	MAR-1
Isotype Control	PE Armenian Hamster IgG Isotype Control[PIP] [Product E-AB-F09853D]
Conjugation	PE
Conjugation Information	PE is designed to be excited by the Blue (488 nm), Green (532 nm) and Yellow-Green (561 nm) lasers and detected using an optical filter centered near 575 nm (e.g., a 585/42 nm bandpass filter).
Storage Buffer	Phosphate buffered solution, pH 7.2, containing 0.09% sodium azide and 1% BSA.

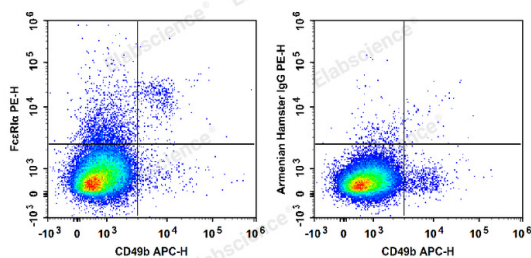
Applications

Recommended usage

FCM

Each lot of this antibody is quality control tested by flow cytometric analysis. Please check your vial before the experiment. Since applications vary, the appropriate dilutions must be determined for individual use. We suggest each investigator should titrate the reagent to obtain optimal results [The recommended concentration is 0.1-1 μg/10⁶ cells in 100 μL volume].

Data



C57BL/6 murine bone marrow cells are stained with APC Anti-Mouse CD49b Antibody and PE Anti-Mouse FcεRIα Antibody (Left). Bone marrow cells stained with APC Anti-Mouse CD49b Antibody and PE Armenian Hamster IgG Isotype Control (Right) are used as control.

Preparation & Storage

Storage	Keep as concentrated solution. This product can be stored at 2-8°C for 12 months. Please protected from prolonged exposure to light and do not freeze.
Shipping	Ice bag

Antigen Information

Alternate Names	Fc-epsilon RI-alpha;FcERI;Fcer1a;High affinity immunoglobulin epsilon receptor subunit alpha
------------------------	--

For Research Use Only

Uniprot ID

P20489

Gene ID

14125

Background

FcεR1α is a transmembrane protein belonging to the Ig superfamily. FcεR1α forms a tetrameric complex with one β and two γ-subunits. The FcεR1 complex plays an important role in triggering IgE-mediated allergic reactions. It is abundantly expressed on mast and basophils and up-regulated by the presence of IgE. Following stimulation via FcεR1α, mast cells and basophils release bioactive chemical mediators such as histamine, resulting in the initiation of allergic reactions. Cross linking of the high-affinity receptor for IgE on tissue mast cells triggers immediate hypersensitivity with local symptoms. The MAR-1 monoclonal antibody reacts with the FcεR1α subunit.