

ZG16 Polyclonal Antibody

Catalog Number:E-AB-19137



Note: Centrifuge before opening to ensure complete recovery of vial contents.

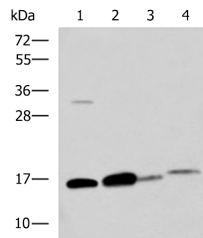
Description

Reactivity	Human, Mouse
Immunogen	Fusion protein of human ZG16
Host	Rabbit
Isotype	IgG
Purification	Antigen affinity purification
Conjugation	Unconjugated
Formulation	PBS with 0.05% NaN ₃ and 40% Glycerol,pH7.4

Applications Recommended Dilution

WB	1:500-1:2000
ELISA	1:5000-1:10000

Data



Western blot analysis of Human sigmoid tissue Mouse large intestine tissue Mouse small intestines tissue Mouse Pancreas tissue lysates using ZG16 Polyclonal Antibody at dilution of 1:800

Observed MW:Refer to figures
Calculated Mw:18 kDa

Preparation & Storage

Storage Store at -20°C. Avoid freeze / thaw cycles.

Background

May play a role in protein trafficking. May act as a linker molecule between the submembranous matrix on the luminal side of zymogen granule membrane (ZGM) and aggregated secretory proteins during granule formation in the TGN.

For Research Use Only

A Reliable Research Partner in Life Science and Medicine

Toll-free: 1-888-852-8623

Web: www.elabscience.com

Tel: 1-832-243-6086

Email: techsupport@elabscience.com

Fax: 1-832-243-6017