

HNF1A Polyclonal Antibody

catalog number: E-AB-53258

Note: Centrifuge before opening to ensure complete recovery of vial contents.

Description

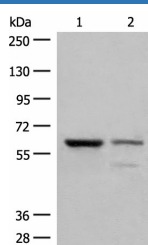
Reactivity	Human;Mouse;Rat
Immunogen	Synthetic peptide of human HNF1A
Host	Rabbit
Isotype	IgG
Purification	Antigen affinity purification
Conjugation	Unconjugated
buffer	Phosphate buffered solution, pH 7.4, containing 0.05% stabilizer and 50% glycerol.

Applications

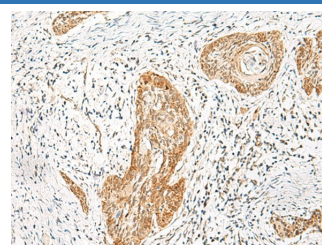
Recommended Dilution

WB	1:500-1:2000
IHC	1:25-1:100

Data



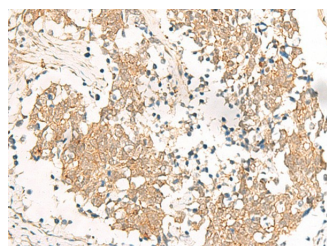
Western blot analysis of Human left kidney cancer tissue and HEPG2 cell lysates using HNF1A Polyclonal Antibody at dilution of 1:200



Immunohistochemistry of paraffin-embedded Human esophagus cancer tissue using HNF1A Polyclonal Antibody at dilution of 1:25(×200)

Observed-MV:Refer to figures

Calculated-MV:67 kDa



Immunohistochemistry of paraffin-embedded Human lung cancer tissue using HNF1A Polyclonal Antibody at dilution of 1:25(×200)

Preparation & Storage

Storage	Store at -20°C Valid for 12 months. Avoid freeze / thaw cycles.
Shipping	The product is shipped with ice pack,upon receipt,store it immediately at the temperature recommended.

Background

The protein encoded by this gene is a transcription factor required for the expression of several liver-specific genes. The encoded protein functions as a homodimer and binds to the inverted palindrome 5'-GTTAATNATTAAC-3'. Defects in this gene are a cause of maturity onset diabetes of the young type 3 (MODY3) and also can result in the appearance of hepatic adenomas. Alternative splicing results in multiple transcript variants encoding different isoforms.

For Research Use Only