

Recombinant Human Interleukin-17F/IL-17F Protein (His Tag)

Catalog Number: PKSH032624



Note: Centrifuge before opening to ensure complete recovery of vial contents.

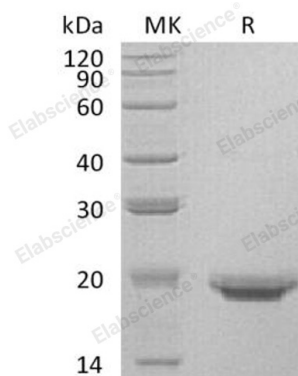
Description

| | |
|---------------------|--|
| Species | Human |
| Mol_Mass | 16.0 kDa |
| Accession | AAH70124.1 |
| Bio-activity | Immobilized Mouse IL-17RA-Fc at 1µg/ml (100 µl/well) can bind Human IL-17F-His. The ED ₅₀ of Human IL-17F-His is 47.94 ng/ml. |

Properties

| | |
|-----------------------|--|
| Purity | > 95 % as determined by reducing SDS-PAGE. |
| Endotoxin | < 1.0 EU per µg of the protein as determined by the LAL method. |
| Storage | Generally, lyophilized proteins are stable for up to 12 months when stored at -20 to -80 °C. Reconstituted protein solution can be stored at 4-8°C for 2-7 days. Aliquots of reconstituted samples are stable at < -20°C for 3 months. |
| Shipping | This product is provided as lyophilized powder which is shipped with ice packs. |
| Formulation | Lyophilized from a 0.2 µm filtered solution of 20mM PB, 150mM NaCl, pH 7.4. Normally 5% - 8% trehalose, mannitol and 0.01% Tween 80 are added as protectants before lyophilization. |
| | Please refer to the specific buffer information in the printed manual. |
| Reconstitution | Please refer to the printed manual for detailed information. |

Data



> 95 % as determined by reducing SDS-PAGE.

Background

Interleukin-17F (IL-17F) exists in a disulfide-linked heterodimer that belongs to the IL-17 family. IL-17F is expressed in activated, but not resting; CD4+ T-cells and activated monocytes. IL-17F has been shown to stimulate the production of several other cytokines; including IL-6; IL-8; and granulocyte colony-stimulating factor. IL-17F can regulate cartilage matrix turnover and stimulates PBMC and T-cell proliferation. IL-17F is also found to inhibit the angiogenesis of endothelial cells and induce endothelial cells to produce IL2; TGFB1/TGFB; and monocyte chemoattractant protein-1. Defects in IL-17F are the cause of familial candidiasis type 6 (CANDF6).

For Research Use Only