

# CALM3 Polyclonal Antibody

Catalog Number:E-AB-65828



**Note:** Centrifuge before opening to ensure complete recovery of vial contents.

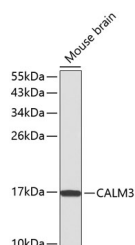
## Description

|                     |   |
|---------------------|---|
| <b>Reactivity</b>   | Human,Mouse,Rat                               |
| <b>Immunogen</b>    | A synthetic peptide of human CALM3            |
| <b>Host</b>         | Rabbit  |
| <b>Isotype</b>      | IgG   |
| <b>Purification</b> | Affinity purification                         |
| <b>Conjugation</b>  | Unconjugated                                  |
| <b>Formulation</b>  | PBS with 0.01% thiomersal,50% glycerol,pH7.3. |

## Applications Recommended Dilution

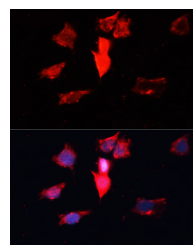
|           |              |
|-----------|--------------|
| <b>WB</b> | 1:500-1:2000 |
| <b>IF</b> | 1:50-1:100   |

## Data



Western blot analysis of extracts of mouse brain using CALM3 Polyclonal Antibody

**Observed Mw:17kDa**  
**Calculated Mw:17kDa**



Immunofluorescence analysis of HeLa cells using CALM3 Polyclonal Antibody at dilution of 1:100.  
Blue: DAPI for nuclear staining.

## Preparation & Storage

**Storage** Store at -20°C. Avoid freeze / thaw cycles.

## Background

This gene encodes a member of a family of proteins that binds calcium and functions as a enzymatic co-factor. Activity of this protein is important in the regulation of the cell cycle and cytokinesis. Multiple alternatively spliced transcript variants have been observed at this gene.

## For Research Use Only

A Reliable Research Partner in Life Science and Medicine

Toll-free: 1-888-852-8623

Web: [www.elabscience.com](http://www.elabscience.com)

Tel: 1-832-243-6086

Email: [techsupport@elabscience.com](mailto:techsupport@elabscience.com)

Fax: 1-832-243-6017