

## PE/Cyanine5.5 Anti-Mouse CD3 Antibody[17A2]

**Catalog Number:** E-AB-F1013I

**Note:** Centrifuge before opening to ensure complete recovery of vial contents.

### Description

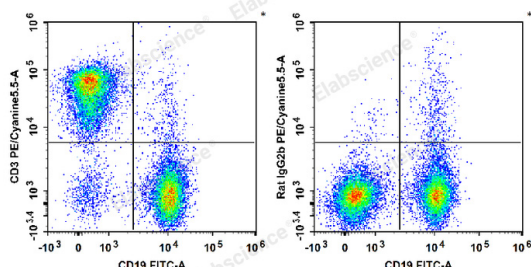
<b>Reactivity</b>	Mouse
<b>Host</b>	Rat
<b>Isotype</b>	Rat IgG2b, $\kappa$
<b>Clone No.</b>	17A2
<b>Isotype Control</b>	PE/Cyanine5.5 Rat IgG2b, $\kappa$ Isotype Control[LTF-2] [Product E-AB-F09842I]
<b>Conjugation</b>	PE/Cyanine 5.5
<b>Conjugation Information</b>	PE/Cyanine5.5 is designed to be excited by the Blue (488 nm), Green (532 nm) and yellow-green (561 nm) lasers and detected using an optical filter centered near 690 nm (e.g., a 690/50 nm bandpass filter).
<b>Storage Buffer</b>	Phosphate buffered solution, pH 7.2, containing 0.09% stabilizer and 1% protein protectant.

### Applications

### Recommended usage

<b>FCM</b>	Each lot of this antibody is quality control tested by flow cytometric analysis. <b>The amount of the reagent is suggested to be used 5 <math>\mu</math>L of antibody per test (million cells in 100 <math>\mu</math>L staining volume or per 100 <math>\mu</math>L of whole blood).</b> Please check your vial before the experiment. Since applications vary, the appropriate dilutions must be determined for individual use.
------------	--

### Data



C57BL/6 murine splenocytes are stained with FITC Anti-Mouse CD19 Antibody and PE/Cyanine5.5 Anti-Mouse CD3 Antibody (Left). Splenocytes are stained with FITC Anti-Mouse CD19 Antibody and PE/Cyanine5.5 Rat IgG2b,  $\kappa$  Isotype Control (Right).

### Preparation & Storage

<b>Storage</b>	Keep as concentrated solution. This product can be stored at 2-8°C for 12 months. Please protected from prolonged exposure to light and do not freeze.
<b>Shipping</b>	Ice bag

### Antigen Information

<b>Alternate Names</b>	CD3;CD3E/D/G/Z;CD3e/d/g/z;T-cell surface glycoprotein CD 3epsilon/delta/gamma/zeta chain
------------------------	--

### For Research Use Only

<b>Uniprot ID</b>	P04235;P11942;P22646;P24161
<b>Gene ID</b>	12502
<b>Background</b>	CD3, also known as T3, is a member of the Ig superfamily and primarily expressed on T cells, NK-T cells, and at different levels on thymocytes during T cell differentiation. CD3 is composed of CD3 $\epsilon$ , $\delta$ , $\gamma$ and $\zeta$ chains. It forms a TCR complex by associating with TCR $\alpha/\beta$ or $\gamma/\delta$ chains. CD3 plays a critical role in TCR signal transduction, T cell activation, and antigen recognition by binding the peptide/MHC antigen complex.

## For Research Use Only