

Recombinant BACE1 Monoclonal Antibody

catalog number: **AN300071P**

Note: Centrifuge before opening to ensure complete recovery of vial contents.

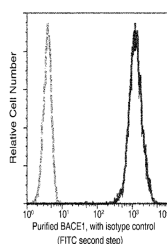
Description

Reactivity	Human
Immunogen	Recombinant Human BACE1 protein
Host	Rabbit
Isotype	IgG
Clone	10F13
Purification	Protein A
Buffer	0.2 µm filtered solution in PBS

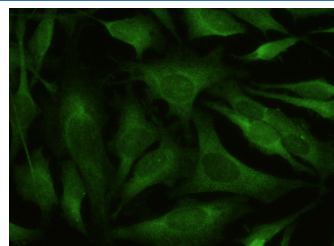
Applications

Applications	Recommended Dilution
ICC/IF	1:20-1:100
FCM	1:25-1:100

Data



Flow cytometric analysis of Human BACE1 expression on Jurkat cells. The cells were stained with purified anti-Human BACE1, then a FITC-conjugated second step antibody. The fluorescence histograms were derived from gated events with the forward and side light-scatter characteristics of intact cells.



Immunofluorescence analysis of Human BACE1 in Hela cells. Cells were fixed with 4% PFA, permeabilized with 1% Triton X-100 in PBS, blocked with 10% serum, and incubated with rabbit anti-Human AK4 Monoclonal Antibody (1:60) at 37°C 1 hour. Then cells were stained with the Alexa Fluor® 488-conjugated Goat Anti-rabbit IgG secondary antibody (green) and counterstained with DAPI for nuclear staining (blue). Positive staining was localized to cytoplasm.

Preparation & Storage

Storage	This antibody can be stored at 2°C-8°C for one month without detectable loss of activity. Antibody products are stable for twelve months from date of receipt when stored at -20°C to -80°C. Preservative-Free. Avoid repeated freeze-thaw cycles.
Shipping	Ice bag

Background

BACE-1 (beta-site APP cleaving enzyme-1) is an aspartic protease and an integral membrane protein. It is the major beta secretase, and together with the gamma secretase, is responsible for generating the amyloid beta peptide (A beta) from the amyloid precursor protein (APP).

For Research Use Only