

CD44 Monoclonal Antibody

catalog number: AN200021P

Note: Centrifuge before opening to ensure complete recovery of vial contents.

Description

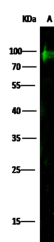
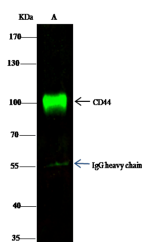
Reactivity	Human
Immunogen	Recombinant Human CD44 protein
Host	Mouse
Isotype	IgG1
Clone	9F3
Purification	Protein A
Buffer	0.2 µm filtered solution in PBS

Applications

Recommended Dilution

WB	1:500-1:1000
IP	0.2-1 µL/mg of lysate

Data



Immunoprecipitation analysis using 0.5 µL anti-CD44 mouse Monoclonal Antibody and 15 µL of 50 % Protein G agarose. Western Blot with CD44 Monoclonal Antibody at dilution of 1:500. Lane A: HeLa Whole Cell Lysate, Lysates/proteins at 30 µg per lane.

Western blot was performed from the immunoprecipitate using CD44 mouse Monoclonal Antibody at a dilution of 1:500. Lane A: 0.5 mg HeLa Whole Cell Lysate

Observed-MW:98 kDa

Calculated-MW:82 kDa

Observed-MW:98 kDa

Calculated-MW:82 kDa

Preparation & Storage

Storage This antibody can be stored at 2°C-8°C for one month without detectable loss of activity. Antibody products are stable for twelve months from date of receipt when stored at -20°C to -80°C. Preservative-Free. Avoid repeated freeze-thaw cycles.

Shipping Ice bag

Background

CD44 is a 80-95 kD glycoprotein also known as Hermes, Pgp1, H-CAM, or HUTCH. It is expressed on all leukocytes, endothelial cells, hepatocytes, and mesenchymal cells. As B and T cells become activated or progress to the memory stage, CD44 expression increases from a low or mid level of intensity to high expression levels. Thus, CD44 has been reported to be a valuable marker for memory cell subsets. CD44 is an adhesion molecule involved in leukocyte attachment to and rolling on endothelial cells, homing to peripheral lymphoid organs and to the sites of inflammation, and leukocyte aggregation.

For Research Use Only