

Recombinant Phospho-Tau (S262) Monoclonal Antibody

catalog number: **AN301700L**

Note: Centrifuge before opening to ensure complete recovery of vial contents.

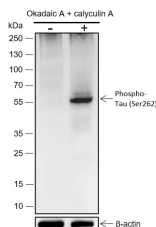
Description

Reactivity	Human;
Immunogen	Recombinant human Tau (phospho S262) fragment
Host	Rabbit
Isotype	IgG, κ
Clone	A408
Purification	Protein A purified
Buffer	PBS, 50% glycerol, 0.05% Proclin 300, 0.05% protein protectant.

Applications Recommended Dilution

WB	1:500-1:2000
-----------	--------------

Data



Western Blot with Phospho-Tau (S262) Monoclonal Antibody
at dilution of 1:2000. (-): HeLa, (2): HeLa+ Okadaic A+
calyculin A (100 nM, 60 min)

Observed-MW:50 kDa

Calculated-MW:79 kDa

Preparation & Storage

Storage	Store at -20°C Valid for 12 months. Avoid freeze / thaw cycles.
Shipping	Ice bag

Background

Tau is a neuronal microtubule-associated protein, which is mainly located in the cytoplasm, cytoskeleton and cell membrane. Tau is expressed in neuronal tissues and exists in the form of a variety of alternate splicing subtypes. Its C-terminus is combined with axon microtubules, and the N-terminus is combined with neuroplasmic membrane components to maintain the stability and plasticity of the neuronal cytoskeleton. In neurons, hyperphosphorylated and abnormally glycosylated Tau protein accumulates, causing neurofibrosis and neurodegeneration, such as Alzheimer's disease (AD), frontotemporal dementia, and chronic traumatic encephalopathy (CTE), Parkinson's disease after encephalitis, etc.

For Research Use Only

Toll-free: 1-888-852-8623
Web: www.elabscience.com

Tel: 1-832-243-6086
Email: techsupport@elabscience.com

Fax: 1-832-243-6017

Rev. V1.0