

## Recombinant Peripherin Monoclonal Antibody

catalog number: **AN301899L**

**Note:** Centrifuge before opening to ensure complete recovery of vial contents.

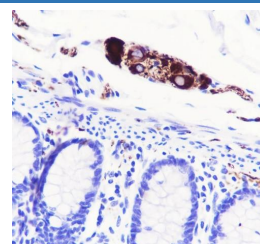
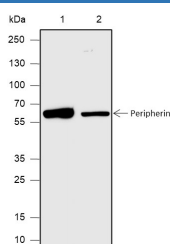
### Description

|                     |   |
|---------------------|---|
| <b>Reactivity</b>   | Human;Rat;Mouse   |
| <b>Immunogen</b>    | Recombinant human Peripherin fragment                           |
| <b>Host</b>         | Rabbit  |
| <b>Isotype</b>      | IgG, $\kappa$   |
| <b>Clone</b>        | A615  |
| <b>Purification</b> | Protein A purified  |
| <b>Buffer</b>       | PBS, 50% glycerol, 0.05% Proclin 300, 0.05% protein protectant. |

### Applications Recommended Dilution

|            |              |
|------------|--------------|
| <b>WB</b>  | 1:500-1:2000 |
| <b>IHC</b> | 1:200-1:1000 |

### Data



Western Blot with Peripherin Monoclonal Antibody at dilution of 1:2000. Lane 1: Neuro-2a; 2 PC-12

Immunohistochemistry of paraffin-embedded Human colon using Peripherin Monoclonal Antibody at dilution of 1:1000.

**Observed-MW:56 kDa**  
**Calculated-MW:54 kDa**

### Preparation & Storage

|                 |   |
|-----------------|---|
| <b>Storage</b>  | Store at -20°C Valid for 12 months. Avoid freeze / thaw cycles. |
| <b>Shipping</b> | Ice bag   |

### Background

Peripherin is a neuron-specific intermediate filament protein that is particularly expressed in peripheral nervous system. It is used to study peripheral nerve development and regeneration, as it is highly expressed during elongation of axon. Peripherin is a routine marker for unmyelinated neurons in trigeminal ganglion (TG) and the dorsal root ganglion (DRG). Peripherin is also expressed in peri-insular areas of islets and it has been identified as a key autoantigen for type 1A diabetes.

### For Research Use Only

Toll-free: 1-888-852-8623  
Web: [www.elabscience.com](http://www.elabscience.com)

Tel: 1-832-243-6086  
Email: [techsupport@elabscience.com](mailto:techsupport@elabscience.com)

Fax: 1-832-243-6017

Rev. V1.1