

## FITC Anti-Rat CD161 Antibody[QA19A15]

Catalog Number: AN00664C

Note: Centrifuge before opening to ensure complete recovery of vial contents.

### Description

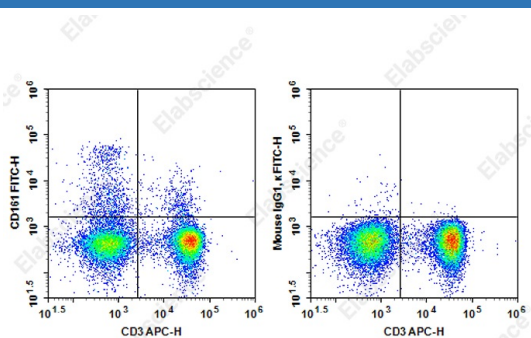
|                         |  |
|-------------------------|--|
| Reactivity              | Rat  |
| Host                    | Mouse  |
| Isotype                 | Mouse IgG1, κ  |
| Clone No.               | QA19A15  |
| Isotype Control         | FITC Mouse IgG1, κ Isotype Control[MOPC-21] [Product E-AB-F09792C]   |
| Conjugation             | FITC   |
| Conjugation Information | FITC is designed to be excited by the Blue laser (488 nm) and detected using an optical filter centered near 530 nm (e.g., a 525/40 nm bandpass filter). |
| Storage Buffer          | Phosphate buffered solution, pH 7.2, containing 0.09% stabilizer.  |

### Applications

### Recommended usage

|     |   |
|-----|---|
| FCM | Each lot of this antibody is quality control tested by flow cytometric analysis. <b>The amount of the reagent is suggested to be used 5 μL of antibody per test (million cells in 100 μL staining volume or per 100 μL of whole blood).</b> Please check your vial before the experiment. Since applications vary, the appropriate dilutions must be determined for individual use. |
|-----|---|

### Data



Staining of Rat splenocytes cells with APC Anti-Rat CD3 Antibody and FITC Anti-Rat CD161 Antibody[QA19A15] (left) or FITC Mouse IgG1, κ Isotype Control (right). Total viable cells were used for analysis.

### Preparation & Storage

|          |   |
|----------|---|
| Storage  | Keep as concentrated solution.<br>This product can be stored at 2-8°C for 24 months. Please protected from prolonged exposure to light and do not freeze. |
| Shipping | Ice bag   |

### Antigen Information

|                 |   |
|-----------------|---|
| Alternate Names | CD161;NKR-P1;CD161a/CD161b;NKR-P1a/KLRB1a |
| Uniprot ID      | P27471                                    |
| Gene ID         | 362443                                    |

### For Research Use Only

## Background

QA19A15 recombinant monoclonal antibody recognizes the rat killer cell lectin-like receptor subfamily B member1 protein, also known as CD161. CD161 is expressed on rat NK cells and T cell subpopulations, activated monocytes, and dendritic cells. CD161 molecules are C-type lectin-like receptors that can either activate (CD161a) or inhibit (CD161b) effector leucocyte responses, eg, cytotoxicity or cytokine production, against target cells which express C-type lectin-like related (Clr) molecules.