

## Recombinant Rab 5A Monoclonal Antibody

catalog number: **AN301004L**

**Note:** Centrifuge before opening to ensure complete recovery of vial contents.

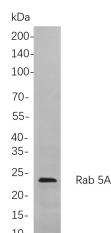
### Description

<b>Reactivity</b>	Human;Mouse;Rat
<b>Immunogen</b>	Recombinant Human Rab 5A protein
<b>Host</b>	Rabbit
<b>Isotype</b>	IgG, $\kappa$
<b>Clone</b>	B755
<b>Purification</b>	Protein A
<b>Buffer</b>	PBS, 50% glycerol, 0.05% Proclin 300, 0.05% protein protectant.

### Applications

Applications	Recommended Dilution
IHC	1:1000-1:4000
WB	1:1000-1:5000
IF	1:200-1:1000
ELISA	1:5000-1:20000
IP	1:50-1:200,

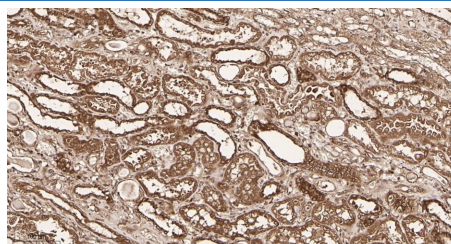
### Data



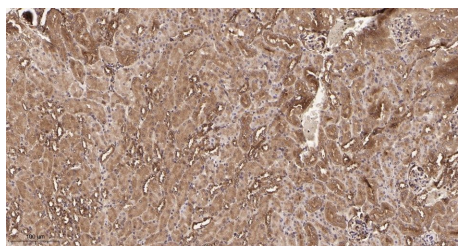
Western Blot with Recombinant Rab 5A Monoclonal Antibody at dilution of 1:1000 dilution. Lane A: HepG2 cells.

**Observed-MW:24 kDa**

**Calculated-MW:24 kDa**



Immunohistochemistry of paraffin-embedded human kidney tissue using Recombinant Rab 5A Monoclonal Antibody at dilution of 1:200.



Immunohistochemistry of paraffin-embedded mouse kidney tissue using Recombinant Rab 5A Monoclonal Antibody at dilution of 1:200.

### Preparation & Storage

<b>Storage</b>	Store at -20°C Valid for 12 months. Avoid freeze / thaw cycles.
<b>Shipping</b>	Ice bag

### Background

### For Research Use Only

Toll-free: 1-888-852-8623  
Web: [www.elabscience.com](http://www.elabscience.com)

Tel: 1-832-243-6086  
Email: [techsupport@elabscience.com](mailto:techsupport@elabscience.com)

Fax: 1-832-243-6017

Rev. V1.2

Enzyme regulation: Regulated by guanine nucleotide exchange factors (GEFs) which promote the exchange of bound GDP for free GTP. Required for the fusion of plasma membranes and early endosomes. similarity: Belongs to the small GTPase superfamily. Rab family. subcellular location: Enriched in stage I melanosomes. subunit: Binds EEA1. Interacts with RIN1 and GAPVD1, which regulate its pathway, probably by acting as a GEF. Interacts with ALS2CL, UNC84B, ZFYVE20 and RUFY1. Interacts with SGSM1 and SGSM3.