

## GDF15 Monoclonal Antibody

**catalog number: AN200035P**

**Note:** Centrifuge before opening to ensure complete recovery of vial contents.

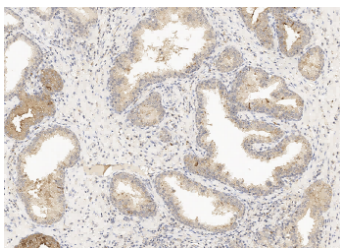
### Description

<b>Reactivity</b>	Human
<b>Immunogen</b>	Recombinant human GDF15 Protein
<b>Host</b>	Mouse
<b>Isotype</b>	IgG1
<b>Clone</b>	11D14
<b>Purification</b>	Protein A
<b>Buffer</b>	0.2 µm filtered solution in PBS

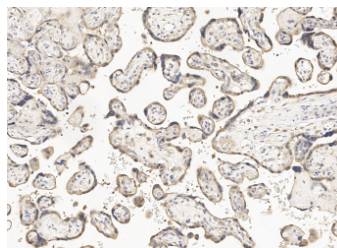
### Applications Recommended Dilution

<b>IHC-P</b>	1:30-1:100
--------------	------------

### Data



Immunohistochemistry of paraffin-embedded human prostate using GDF15 Monoclonal Antibody at dilution of 1:100.



Immunohistochemistry of paraffin-embedded human placenta using GDF15 Monoclonal Antibody at dilution of 1:100.

### Preparation & Storage

<b>Storage</b>	This antibody can be stored at 2°C-8°C for one month without detectable loss of activity. Antibody products are stable for twelve months from date of receipt when stored at -20°C to -80°C. Preservative-Free. Avoid repeated freeze-thaw cycles.
<b>Shipping</b>	Ice bag

### Background

Growth Differentiation Factor 15 (GDF-15), also called Macrophage inhibitory cytokine-1 (MIC-1), placental transforming growth factor-beta, prostate-derived factor, and placental bone morphogenetic protein, is a divergent member of the transforming growth factor beta (TGF-beta) superfamily. GDF-15 is highly expressed in placenta and is expressed at lower levels in kidney, pancreas, prostate and colon. It is also widely expressed in brain.

### For Research Use Only