

## Recombinant Chromogranin A/CHGA/CGA Monoclonal Antibody

catalog number: **AN300073P**

**Note:** Centrifuge before opening to ensure complete recovery of vial contents.

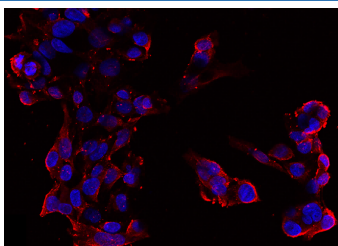
### Description

<b>Reactivity</b>	Human
<b>Immunogen</b>	A synthetic peptide corresponding to the N-terminus of the human Chromogranin A/CHGA/CGA
<b>Host</b>	Rabbit
<b>Isotype</b>	IgG
<b>Clone</b>	11D9
<b>Purification</b>	Protein A
<b>Buffer</b>	0.2 µm filtered solution in PBS

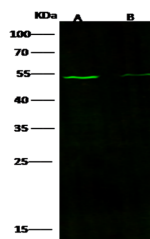
### Applications Recommended Dilution

<b>WB</b>	1:500-1:1000
<b>ICC/IF</b>	1:20-1:100

### Data



Immunofluorescence analysis of CHGA in HepG2 cells. Cells were fixed with 4% PFA, permeabilized with 0.1% Triton X-100 in PBS, blocked with 10% serum, and incubated with rabbit anti-human CHGA Monoclonal Antibody (dilution ratio 1:60) at 4°C overnight. Then cells were stained with the Alexa Fluor®594-conjugated Goat Anti-rabbit IgG secondary antibody (red) and counterstained with DAPI for nuclear staining (blue). Positive staining was localized to Cytoplasm.



Western Blot with Chromogranin A/CHGA/CGA Monoclonal Antibody at dilution of 1:500. Lane A: HepG2 Whole Cell Lysate, Lane B: SH-SY5Y Whole Cell Lysate, Lysates/proteins at 30 µg per lane.

**Observed-MW:50 kDa**

**Calculated-MW:50 kDa**

### Preparation & Storage

<b>Storage</b>	This antibody can be stored at 2°C-8°C for one month without detectable loss of activity. Antibody products are stable for twelve months from date of receipt when stored at -20°C to -80°C. Preservative-Free. Avoid repeated freeze-thaw cycles.
<b>Shipping</b>	Ice bag

### Background

Human Chromogranin A (CHGA) an acidic protein and a member of the chromogranin/secretogranin family of neuroendocrine secretory proteins. It is located in secretory vesicles of neurons and endocrine cells such as islet beta cell secretory granules in pancreas. Chromogranin A expression has been observed in neuroendocrine tumors, medullary thyroid carcinoma, as well as carcinoid tumors.

### For Research Use Only