

## ENTPD5 Monoclonal Antibody

**catalog number:** AN200117P

**Note:** Centrifuge before opening to ensure complete recovery of vial contents.

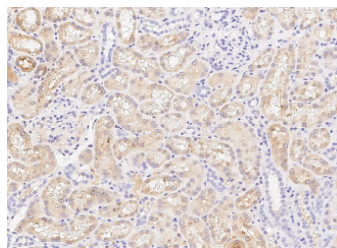
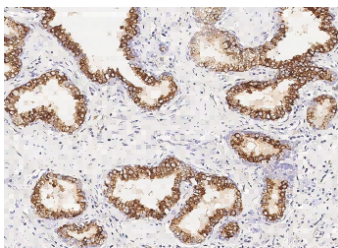
### Description

<b>Reactivity</b>	Human
<b>Immunogen</b>	Recombinant Human ENTPD5 Protein
<b>Host</b>	Mouse
<b>Isotype</b>	IgG1
<b>Clone</b>	7A8
<b>Purification</b>	Protein A
<b>Buffer</b>	0.2 µm filtered solution in PBS

### Applications Recommended Dilution

<b>IHC-P</b>	1:20-1:100
--------------	------------

### Data



Immunohistochemistry of paraffin-embedded human prostate using ENTPD5 Monoclonal Antibody at dilution of 1:30. Immunohistochemistry of paraffin-embedded human kidney using ENTPD5 Monoclonal Antibody at dilution of 1:30.

### Preparation & Storage

<b>Storage</b>	This antibody can be stored at 2°C-8°C for one month without detectable loss of activity. Antibody products are stable for twelve months from date of receipt when stored at -20°C to -80°C. Preservative-Free. Avoid repeated freeze-thaw cycles.
<b>Shipping</b>	Ice bag

### Background

The protein encoded by this gene is similar to E-type nucleotidases (NTPases)/ecto-ATPase/apyrases. NTPases, such as CD39, mediate catabolism of extracellular nucleotides. ENTPD5 contains 1 apyrase-conserved regions which is characteristic of NTPases.

### For Research Use Only