

Recombinant Human SULT1A2 Protein (His Tag)

Catalog Number: PKSH033085

Note: Centrifuge before opening to ensure complete recovery of vial contents.

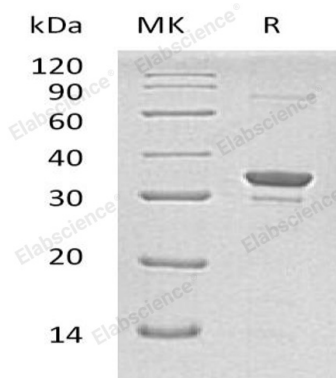
Description

Species	Human
Source	E.coli-derived Human SULT1A2 protein Met 1-Leu295, with an N-terminal His
Calculated MW	36.4 kDa
Observed MW	33 kDa
Accession	AAI13728.1
Bio-activity	Not validated for activity

Properties

Purity	> 95 % as determined by reducing SDS-PAGE.
Concentration	Subject to label value.
Endotoxin	< 1.0 EU per µg of the protein as determined by the LAL method.
Storage	Store at < -20°C, stable for 6 months. Please minimize freeze-thaw cycles.
Shipping	This product is provided as liquid. It is shipped at frozen temperature with blue ice/gel packs. Upon receipt, store it immediately at < -20°C.
Formulation	Supplied as a 0.2 µm filtered solution of 20mM Tris-HCl, 100mM NaCl, pH 8.0.

Data



> 95 % as determined by reducing SDS-PAGE.

Background

Sulfotransferase 1A2 (SULT1A2) is a member of the Sulfotransferase 1 family. Sulfotransferase enzymes catalyze the sulfate conjugation of many hormones, neurotransmitters, drugs, and xenobiotic compounds. SULT1A2 is a cytoplasmic protein and exists as a homodimer. SULT1A2 mediates the metabolic activation of carcinogenic N-hydroxyarylamines to DNA binding products and might thus participate as a modulating factor of cancer risk.

For Research Use Only