

EIF4EBP1 Polyclonal Antibody

catalog number: E-AB-40327

Note: Centrifuge before opening to ensure complete recovery of vial contents.

Description

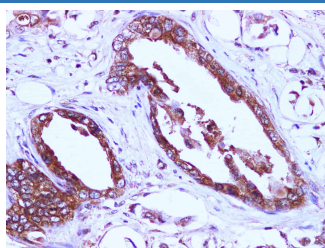
| | |
|---------------------|---|
| Reactivity | Human |
| Immunogen | Recombinant Human Eukaryotic translation initiation factor 4E-binding protein 1 protein |
| Host | Rabbit |
| Isotype | IgG |
| Purification | Antigen Affinity Purification |
| Conjugation | Unconjugated |
| Buffer | PBS with 0.05% proclin 300, 1% protective protein and 50% glycerol, pH7.4 |

Applications

Recommended Dilution

| | |
|------------|-------------|
| IHC | 1:100-1:400 |
|------------|-------------|

Data



Immunohistochemistry of paraffin-embedded Human pancreatic cancer using EIF4EBP1 Polyclonal Antibody at dilution of 1:100

Preparation & Storage

| | |
|-----------------|--|
| Storage | Store at -20°C Valid for 12 months. Avoid freeze / thaw cycles. |
| Shipping | The product is shipped with ice pack, upon receipt, store it immediately at the temperature recommended. |

Background

Eukaryotic translation initiation factor 4E-binding protein 1 (4EBP1), is a member of 4EBPs family, which regulate the translation of a subset of mRNA by competing with eIF4G for binding to eIF4E, thus preventing the assembly of the eIF4F complex. The eIF4F facilitates the recruitment of other translation initiation factors to form the complex and then initiates cap-dependent translation. 4EBP1 also mediates the regulation of protein translation by growth factors, hormones and other stimuli that signal through the MAP kinase and mTORC1 pathways. There are three forms of 4EBP1, alpha, beta and gamma.