

Recombinant Human SIGLEC3/CD33 Protein (Fc &His Tag)

Catalog Number: PKSH033054

Note: Centrifuge before opening to ensure complete recovery of vial contents.

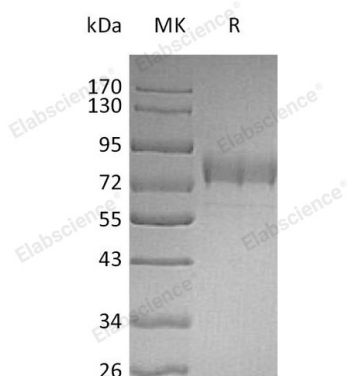
Description

Species	Human
Source	HEK293 Cells-derived Human SIGLEC3;CD33 protein Asp18-His259, with an C-terminal Fc & His
Calculated MW	55.0 kDa
Observed MW	80 kDa
Accession	AAH28152.1
Bio-activity	Not validated for activity

Properties

Purity	> 95 % as determined by reducing SDS-PAGE.
Endotoxin	< 1.0 EU per µg of the protein as determined by the LAL method.
Storage	Generally, lyophilized proteins are stable for up to 12 months when stored at -20 to -80°C. Reconstituted protein solution can be stored at 4-8°C for 2-7 days. Aliquots of reconstituted samples are stable at < -20°C for 3 months.
Shipping	This product is provided as lyophilized powder which is shipped with ice packs.
Formulation	Lyophilized from a 0.2 µm filtered solution of 20mM PB, 150mM NaCl, 2mM EDTA, pH 7.2. Normally 5% - 8% trehalose, mannitol and 0.01% Tween 80 are added as protectants before lyophilization. Please refer to the specific buffer information in the printed manual.
Reconstitution	Please refer to the printed manual for detailed information.

Data



> 95 % as determined by reducing SDS-PAGE.

Background

CD33 is a type I Lectin belonging to the Ig superfamily. CD33 contains an N terminal Ig like V type domain, which mediates sialic acid binding, followed by one Ig like C2 type domain, a transmembrane region and a cytoplasmic tail containing two conserved immunoreceptor tyrosine based inhibition motifs (ITIMs). Eleven human Siglecs have been characterized. Siglecs 5 to 11 share a high degree of sequence similarity with CD33/Siglec3 both in their extracellular and intracellular regions. They are collectively referred to as CD33 related Siglecs. CD33 related Siglecs have differential expression pattern within the hematopoietic system. They are involved in the regulation of cellular activation within the immune system. Siglec 3 expression is restricted to cells of myelomonocytic lineage. Siglec3 recruits SHP1 and SHP2 to its ITIMs upon phosphorylation.

For Research Use Only

Toll-free: 1-888-852-8623
Web: www.elabscience.com

Tel: 1-832-243-6086
Email: techsupport@elabscience.com

Fax: 1-832-243-6017