

## Galectin 3 Monoclonal Antibody

catalog number: E-AB-22006

**Note:** Centrifuge before opening to ensure complete recovery of vial contents.

### Description

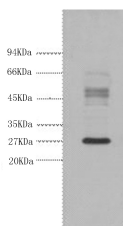
<b>Reactivity</b>	Human
<b>Immunogen</b>	Synthetic Peptide
<b>Host</b>	Mouse
<b>Isotype</b>	IgG
<b>Clone</b>	1A2
<b>Purification</b>	Protein A purification
<b>Conjugation</b>	Unconjugated
<b>Buffer</b>	Phosphate buffered solution, pH 7.4, containing 0.05% stabilizer, 0.5% protein protectant and 50% glycerol.

### Applications

### Recommended Dilution

<b>WB</b>	1:1000-1:3000
<b>IHC</b>	1:100-1:300
<b>IF</b>	1:100-200

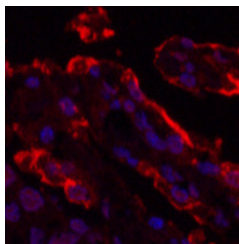
### Data



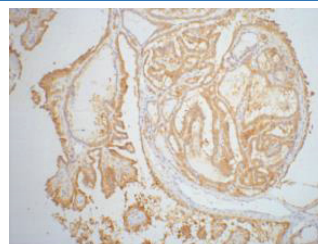
Western Blot analysis of HeLa cells using Galectin 3 Monoclonal Antibody at dilution of 1:3000.

**Observed-MW:26 kDa**

**Calculated-MW:26 kDa**



Immunofluorescence analysis of Human lung cancer tissue using Galectin 3 Monoclonal Antibody at dilution of 1:200.



Immunohistochemistry of paraffin-embedded Human thyroid tissue using Galectin 3 Monoclonal Antibody at dilution of 1:200.

### Preparation & Storage

<b>Storage</b>	Store at -20°C Valid for 12 months. Avoid freeze / thaw cycles.
<b>Shipping</b>	The product is shipped with ice pack, upon receipt, store it immediately at the temperature recommended.

### Background

### For Research Use Only

Galactose-specific lectin which binds IgE. May mediate with the alpha-3, beta-1 integrin the stimulation by CSPG4 of endothelial cells migration. Together with DMBT1, required for terminal differentiation of columnar epithelial cells during early embryogenesis.