

Recombinant Human STUB1 Protein

Catalog Number: PKSH032367

Note: Centrifuge before opening to ensure complete recovery of vial contents.

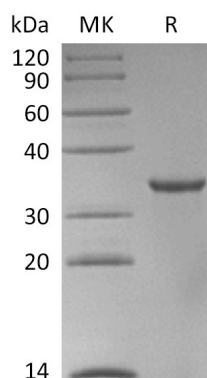
Description

Species	Human
Source	E.coli-derived Human STUB1 protein Met 1-Tyr303
Calculated MW	34.9 kDa
Observed MW	33 kDa
Accession	Q9UNE7
Bio-activity	Not validated for activity

Properties

Purity	> 95 % as determined by reducing SDS-PAGE.
Concentration	Subject to label value.
Endotoxin	< 1.0 EU per µg of the protein as determined by the LAL method.
Storage	Store at < -20°C, stable for 6 months. Please minimize freeze-thaw cycles.
Shipping	This product is provided as liquid. It is shipped at frozen temperature with blue ice/ gel packs. Upon receipt, store it immediately at < - 20°C.
Formulation	Supplied as a 0.2 µm filtered solution of PBS, pH7.4.

Data



Background

E3 Ubiquitin-Protein Ligase CHIP is a cytoplasmic protein. CHIP is highly expressed in skeletal muscle, heart, pancreas, brain and placenta. CHIP interacts with the molecular chaperones Hsc70-Hsp70 and Hsp90 through its TPR domain; lead to in client substrate ubiquitylation and degradation by the proteasome. CHIP targets misfolded chaperone substrates towards proteasomal degradation. CHIP mediates transfer of non-canonical short ubiquitin chains to HSPA8 that have no effect on HSPA8 degradation. CHIP plays a role in base-excision repair: catalyzes polyubiquitination by amplifying the HUWE1/ARF-BP1-dependent monoubiquitination and leading to POLB-degradation by the proteasome. It also may regulate the receptor stability and activity through proteasomal degradation.

For Research Use Only

Toll-free: 1-888-852-8623
Web: www.elabscience.com

Tel: 1-832-243-6086
Email: techsupport@elabscience.com

Fax: 1-832-243-6017