

## Elab Fluor® Violet 610 Anti-Mouse MHC II Antibody[M5/114]

Catalog Number: E-AB-F0990UT

Note: Centrifuge before opening to ensure complete recovery of vial contents.

### Description

<b>Reactivity</b>	Mouse
<b>Host</b>	Rat
<b>Isotype</b>	Rat IgG2b, κ
<b>Clone No.</b>	M5/114
<b>Isotype Control</b>	Elab Fluor® Violet 610 Rat IgG2b, κ Isotype Control[LTF-2] [Product E-AB-F09843T]
<b>Conjugation</b>	Elab Fluor® Violet 610
<b>Conjugation Information</b>	Elab Fluor® Violet 610 is designed to be excited by the violet laser (405 nm) and detected using an optical filter centered near 613 nm (e.g., a 615/20 nm bandpass filter).
<b>Storage Buffer</b>	Phosphate buffered solution, pH 7.2, containing 0.09% sodium azide and 1% BSA.

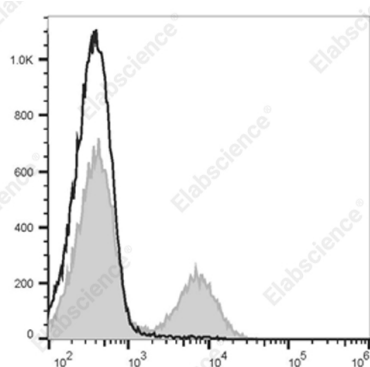
### Applications

### Recommended usage

#### FCM

Each lot of this antibody is quality control tested by flow cytometric analysis. Please check your vial before the experiment. Since applications vary, the appropriate dilutions must be determined for individual use. We suggest each investigator should titrate the reagent to obtain optimal results [The recommended concentration is 0.1-1 μg/10<sup>6</sup> cells in 100 μL volume].

### Data



Staining of C57BL/6 murine splenocytes with Elab Fluor® Violet 610 Anti-Mouse MHC II (I-A/I-E) Antibody[M5/114]

(filled gray histogram) or Elab Fluor® Violet 610 Rat IgG2b, κ Isotype Control (empty black histogram). Total viable cells were used for analysis.

### Preparation & Storage

<b>Storage</b>	Keep as concentrated solution. This product can be stored at 2-8°C for 12 months. Please protected from prolonged exposure to light and do not freeze.
<b>Shipping</b>	Ice bag

### Antigen Information

<b>Alternate Names</b>	H2-Ab1/Eb1;I-E beta MHC class II;MHC class II;MHC class II H2-IA-beta-psi;Major histocompatibility protein class II beta chain
<b>Uniprot ID</b>	P14483;O78196;

### For Research Use Only

Gene ID

14961,14969

**For Research Use Only**

Tel: 400-999-2100

Web: [www.elabscience.cn](http://www.elabscience.cn)

Email: [techsupport@elabscience.cn](mailto:techsupport@elabscience.cn)

Rev. V1.7