

GPR119 Polyclonal Antibody

catalog number: E-AB-19928

Note: Centrifuge before opening to ensure complete recovery of vial contents.

Description

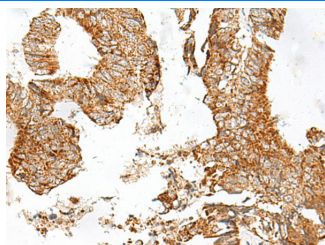
Reactivity	Human
Immunogen	Synthetic peptide of human GPR119
Host	Rabbit
Isotype	IgG
Purification	Antigen affinity purification
Conjugation	Unconjugated
Buffer	Phosphate buffered solution, pH 7.4, containing 0.05% stabilizer and 50% glycerol.

Applications

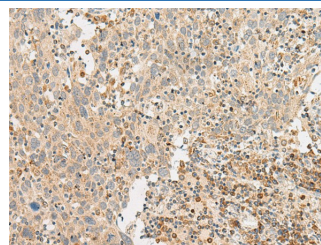
Recommended Dilution

IHC	1:40-1:200
------------	------------

Data



Immunohistochemistry of paraffin-embedded Human colorectal cancer tissue using GPR119 Polyclonal Antibody at dilution of 1:45(×200)



Immunohistochemistry of paraffin-embedded Human cervical cancer tissue using GPR119 Polyclonal Antibody at dilution of 1:45(×200)

Preparation & Storage

Storage	Store at -20°C Valid for 12 months. Avoid freeze / thaw cycles.
Shipping	The product is shipped with ice pack, upon receipt, store it immediately at the temperature recommended.

Background

This gene encodes a member of the rhodopsin subfamily of G-protein-coupled receptors that is expressed in the pancreas and gastrointestinal tract. The encoded protein is activated by lipid amides including lysophosphatidylcholine and oleoylethanolamide and may be involved in glucose homeostasis. This protein is a potential drug target in the treatment of type 2 diabetes.