

Recombinant Mouse c-kit/CD117 Protein (Fc Tag)

Catalog Number: PKSM040633

Note: Centrifuge before opening to ensure complete recovery of vial contents.

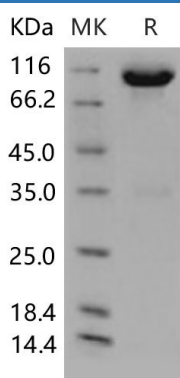
Description

Species	Mouse
Source	HEK293 Cells-derived Mouse c-kit/CD117 protein Met 1-Thr 523, with an C-terminal hFc
Mol_Mass	82.5 kDa
Accession	NP_001116205.1
Bio-activity	Immobilized mouse KITL at 2 µg/ml (100 µl/well) can bind mouse KIT / CD117 with a linear ranger of 1. 28-32 ng/ml.

Properties

Purity	> 90 % as determined by reducing SDS-PAGE.
Endotoxin	< 1.0 EU per µg of the protein as determined by the LAL method.
Storage	Generally, lyophilized proteins are stable for up to 12 months when stored at -20 to -80 °C. Reconstituted protein solution can be stored at 4-8°C for 2-7 days. Aliquots of reconstituted samples are stable at < -20°C for 3 months.
Shipping	This product is provided as lyophilized powder which is shipped with ice packs.
Formulation	Lyophilized from sterile PBS, pH 7.4 Normally 5% - 8% trehalose, mannitol and 0.01% Tween 80 are added as protectants before lyophilization. Please refer to the specific buffer information in the printed manual.
Reconstitution	Please refer to the printed manual for detailed information.

Data



> 90 % as determined by reducing SDS-PAGE.

Background

For Research Use Only

Toll-free: 1-888-852-8623
Web: www.elabscience.com

Tel: 1-832-243-6086
Email: techsupport@elabscience.com

Fax: 1-832-243-6017

Rev. V3.4

C-Kit is a type 3 transmembrane receptor for MGF (mast cell growth factor, also known as stem cell factor). c-Kit contains 5 Ig-like C2-type (immunoglobulin-like) domains and 1 protein kinase domain. It belongs to the protein kinase superfamily, tyr protein kinase family and CSF-1/PDGF receptor subfamily. C-Kit contains 5 Ig-like C2-type (immunoglobulin-like) domains and 1 protein kinase domain. C-Kit has a tyrosine-protein kinase activity. Binding of the ligands leads to the autophosphorylation of KIT and its association with substrates such as phosphatidylinositol 3-kinase. Antibodies to c-Kit are widely used in immunohistochemistry to help distinguish particular types of tumour in histological tissue sections. It is used primarily in the diagnosis of GISTs. In GISTs, c-Kit staining is typically cytoplasmic, with stronger accentuation along the cell membranes. C-Kit antibodies can also be used in the diagnosis of mast cell tumours and in distinguishing seminomas from embryonal carcinomas. Mutations in c-Kit gene are associated with gastrointestinal stromal tumors, mast cell disease, acute myelogenous leukemia, and piebaldism. Defects in KIT are a cause of acute myelogenous leukemia (AML). AML is a malignant disease in which hematopoietic precursors are arrested in an early stage of development. Note=Somatic mutations that lead to constitutive activation of KIT are detected in AML patients.

For Research Use Only

Toll-free: 1-888-852-8623
Web: www.elabscience.com

Tel: 1-832-243-6086
Email: techsupport@elabscience.com

Fax: 1-832-243-6017