

Recombinant Cytochrome P450 2D6 Monoclonal Antibody

catalog number: **E-AB-81500**

Note: Centrifuge before opening to ensure complete recovery of vial contents.

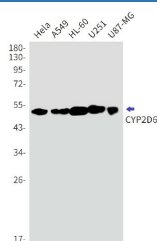
Description

Reactivity	Human
Immunogen	Recombinant protein of human CYP2D6
Host	Rabbit
Isotype	IgG
Clone	R07-3G8
Purification	Affinity Purified
Buffer	50mM Tris-Glycine(pH 7.4), 0.15M NaCl, 40% Glycerol, 0.05% stabilizer and 0.05% protective protein.

Applications

Applications	Recommended Dilution
WB	1:500-1:1000
IHC	1:50-1:100
IF	1:50-1:100

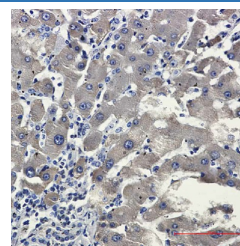
Data



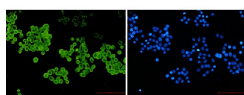
Western blot detection of CYP2D6 in HeLa, A549, HL-60, U251, U87-MG cell lysates using CYP2D6 Rabbit mAb (1:1000 diluted). Predicted band size: 56 kDa. Observed band size: 50 kDa.

Observed-MW: 50 kDa

Calculated-MW: 56 kDa



Immunohistochemistry of CYP2D6 in paraffin-embedded liver cancer tissue using CYP2D6 Rabbit mAb at dilution 1:50



Immunofluorescence of CYP2D6 (green) in HeLa using CYP2D6 Rabbit mAb at dilution 1:50, and DAPI (blue)

Preparation & Storage

Storage	Store at -20°C Valid for 12 months. Avoid freeze / thaw cycles.
Shipping	The product is shipped with ice pack, upon receipt, store it immediately at the temperature recommended.

Background

For Research Use Only

CYP2D6(Cytochrome P450 2D6) is also named as CYP2DL1 and belongs to the cytochrome P450 family. It is a monooxygenase that involved in the metabolism of drugs such as antiarrhythmics,adrenoceptor antagonists,and tricyclic antidepressants. CYP2D6 is responsible for the metabolism of many drugs and environmental chemicals that it oxidizes. It has 2 isoforms produced by alternative splicing with the molecular weight of 56 kDa and 50 kDa.

For Research Use Only