

Recombinant Human LRG1 Protein (Fc & His Tag)

Catalog Number: PKSH032693

Note: Centrifuge before opening to ensure complete recovery of vial contents.

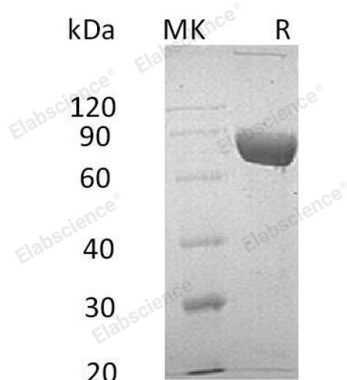
Description

Species	Human
Source	HEK293 Cells-derived Human LRG1 protein Val36-Gln347, with an C-terminal Fc & His
Calculated MW	62.3 kDa
Observed MW	65-90 kDa
Accession	AAH70198.1
Bio-activity	Not validated for activity

Properties

Purity	> 95 % as determined by reducing SDS-PAGE.
Concentration	Subject to label value.
Endotoxin	< 1.0 EU per µg of the protein as determined by the LAL method.
Storage	Store at < -20°C, stable for 6 months. Please minimize freeze-thaw cycles.
Shipping	This product is provided as liquid. It is shipped at frozen temperature with blue ice/ gel packs. Upon receipt, store it immediately at < - 20°C.
Formulation	Supplied as a 0.2 µm filtered solution of 20mM Tris-HCl, 200mM NaCl, 10% Glycerol, pH 8.0.

Data



> 95 % as determined by reducing SDS-PAGE.

Background

LRG1 is a secreted protein and contains eight LRR repeats and one LRRCT domain; It can be expressed during granulocyte differentiation. LRG1 has been shown to be involved in protein-protein interaction; signal transduction; cell adhesion and development. Levels of the LRG protein are markedly elevated in acute appendicitis and therefore could be used as a diagnostic aid.

For Research Use Only

Toll-free: 1-888-852-8623
Web: www.elabscience.com

Tel: 1-832-243-6086
Email: techsupport@elabscience.com

Fax: 1-832-243-6017