

## SIGLEC10 Polyclonal Antibody

**catalog number: E-AB-92237**

**Note:** Centrifuge before opening to ensure complete recovery of vial contents.

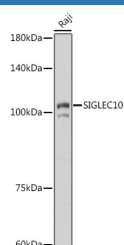
### Description

<b>Reactivity</b>	Human; Rat
<b>Immunogen</b>	Recombinant fusion protein of human SIGLEC10
<b>Host</b>	Rabbit
<b>Isotype</b>	IgG
<b>Purification</b>	Affinity purification
<b>Buffer</b>	Phosphate buffered solution, pH 7.4, containing 0.05% stabilizer and 50% glycerol.

### Applications Recommended Dilution

<b>WB</b>	1:500-1:2000
-----------	--------------

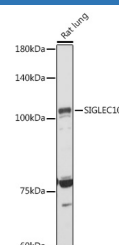
### Data



Western blot analysis of extracts of Raji cells using SIGLEC10 Polyclonal Antibody at 1:1000 dilution.

**Observed-MW: 100 kDa**

**Calculated-MW: 76 kDa**



Western blot analysis of extracts of Rat lung using SIGLEC10 Polyclonal Antibody at 1:1000 dilution.

**Observed-MW: 100 kDa**

**Calculated-MW: 76 kDa**

### Preparation & Storage

<b>Storage</b>	Store at -20°C Valid for 12 months. Avoid freeze / thaw cycles.
<b>Shipping</b>	The product is shipped with ice pack, upon receipt, store it immediately at the temperature recommended.

### Background

SIGLECs are members of the immunoglobulin superfamily that are expressed on the cell surface. Most SIGLECs have 1 or more cytoplasmic immune receptor tyrosine-based inhibitory motifs, or ITIMs. SIGLECs are typically expressed on cells of the innate immune system, with the exception of the B-cell expressed SIGLEC6 (MIM 604405).

### For Research Use Only