

Recombinant Glutamine Synthetase Monoclonal Antibody

catalog number: **AN300986L**

Note: Centrifuge before opening to ensure complete recovery of vial contents.

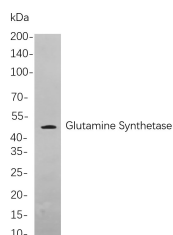
Description

Reactivity	Human;Mouse;Rat
Immunogen	Recombinant Human Glutamine Synthetase protein
Host	Rabbit
Isotype	IgG, κ
Clone	B737
Purification	Protein A
Buffer	PBS, 50% glycerol, 0.05% Proclin 300, 0.05% protein protectant.

Applications

Applications	Recommended Dilution
IHC	1:1000-1:4000
WB	1:1000-1:5000
IF	1:200-1:1000
ELISA	1:5000-1:20000

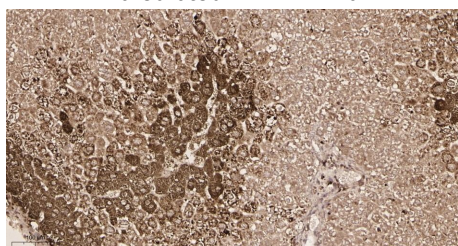
Data



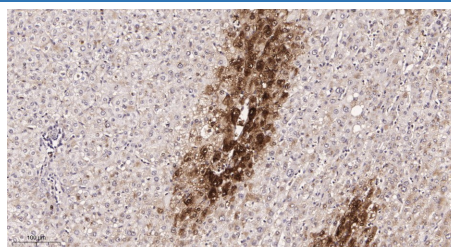
Western Blot with Recombinant Glutamine Synthetase Monoclonal Antibody at dilution of 1:1000 dilution. Lane A: HepG2 cells.

Observed-MW:42 kDa

Calculated-MW:42 kDa



Immunohistochemistry of paraffin-embedded mouse liver tissue using Recombinant Glutamine Synthetase Monoclonal Antibody at dilution of 1:200.



Immunohistochemistry of paraffin-embedded human hepatocellular carcinoma tissue using Recombinant Glutamine Synthetase Monoclonal Antibody at dilution of 1:200.

Preparation & Storage

Storage	Store at -20°C Valid for 12 months. Avoid freeze / thaw cycles.
Shipping	Ice bag

Background

For Research Use Only

The protein encoded by this gene belongs to the glutamine synthetase family. It catalyzes the synthesis of glutamine from glutamate and ammonia in an ATP-dependent reaction. This protein plays a role in ammonia and glutamate detoxification, acid-base homeostasis, cell signaling, and cell proliferation. Glutamine is an abundant amino acid, and is important to the biosynthesis of several amino acids, pyrimidines, and purines. Mutations in this gene are associated with congenital glutamine deficiency, and overexpression of this gene was observed in some primary liver cancer samples. There are six pseudogenes of this gene found on chromosomes 2, 5, 9, 11, and 12. Alternative splicing results in multiple transcript variants.