

TMED10 Polyclonal Antibody

catalog number: E-AB-19178

Note: Centrifuge before opening to ensure complete recovery of vial contents.

Description

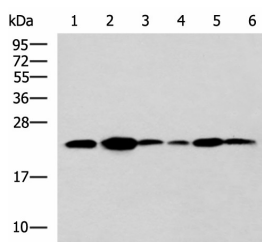
| | |
|---------------------|--|
| Reactivity | Human;Mouse;Rat |
| Immunogen | Fusion protein of human TMED10 |
| Host | Rabbit |
| Isotype | IgG |
| Purification | Antigen affinity purification |
| Conjugation | Unconjugated |
| Buffer | Phosphate buffered solution, pH 7.4, containing 0.05% stabilizer and 50% glycerol. |

Applications

Recommended Dilution

| | |
|------------|---------------|
| WB | 1:1000-1:5000 |
| IHC | 1:50-1:200 |

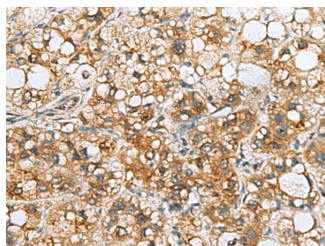
Data



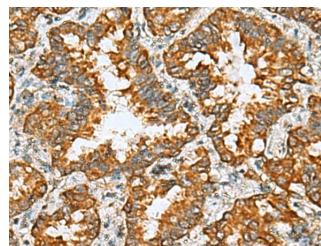
Western blot analysis of NIH/3T3 cell Mouse Pancreas tissue
Rat lung tissue Mouse liver tissue Hela Raji cell lysates using
TMED10 Polyclonal Antibody at dilution of 1:900

Observed-MW:Refer to figures

Calculated-MW:25 kDa



Immunohistochemistry of paraffin-embedded Human liver
cancer tissue using TMED10 Polyclonal Antibody at dilution
of 1:65(×200)



Immunohistochemistry of paraffin-embedded Human lung
cancer tissue using TMED10 Polyclonal Antibody at
dilution of 1:65(×200)

Preparation & Storage

| | |
|-----------------|--|
| Storage | Store at -20°C Valid for 12 months. Avoid freeze / thaw cycles. |
| Shipping | The product is shipped with ice pack,upon receipt,store it immediately at the temperature recommended. |

Background

For Research Use Only

This gene is a member of the EMP24/GP25L/p24 family and encodes a protein with a GOLD domain. This type I membrane protein is localized to the plasma membrane and golgi cisternae and is involved in vesicular protein trafficking. The protein is also a member of a heteromeric secretase complex and regulates the complex's gamma-secretase activity without affecting its epsilon-secretase activity. Mutations in this gene have been associated with early-onset familial Alzheimer's disease. This gene has a pseudogene on chromosome 8.