

## Recombinant Claudin-7 Monoclonal Antibody

catalog number: **AN301493L**

**Note:** Centrifuge before opening to ensure complete recovery of vial contents.

### Description

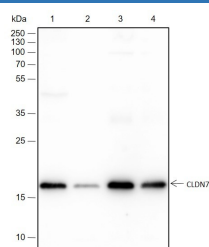
<b>Reactivity</b>	Human;Rat;Mouse
<b>Immunogen</b>	Recombinant human Claudin-7 fragment
<b>Host</b>	Rabbit
<b>Isotype</b>	IgG, $\kappa$
<b>Clone</b>	A188
<b>Purification</b>	Protein A purified
<b>Buffer</b>	PBS, 50% glycerol, 0.05% Proclin 300, 0.05% protein protectant.

### Applications

### Recommended Dilution

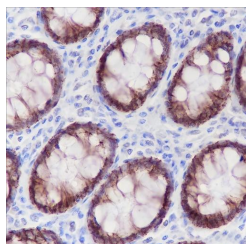
<b>WB</b>	1:500-1:1000
<b>IHC</b>	1:50-1:100

### Data

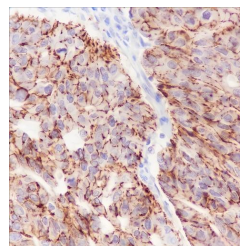


Western Blot with Claudin-7 Monoclonal Antibody at dilution of 1:1000. Lane 1: HT-29, Lane 2: HCT-116, Lane 3: Mouse colon, Lane 4: Rat colon

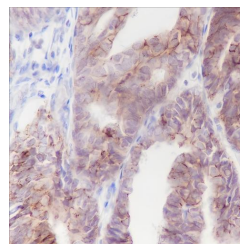
**Observed-MW:18 kDa**  
**Calculated-MW:22 kDa**



Immunohistochemistry of paraffin-embedded Human colon using Claudin-7 Monoclonal Antibody at dilution of 1:100.



Immunohistochemistry of paraffin-embedded Human colon cancer using Claudin-7 Monoclonal Antibody at dilution of 1:100.



Immunohistochemistry of paraffin-embedded Human endometrial cancer using Claudin-7 Monoclonal Antibody at dilution of 1:100.

### Preparation & Storage

<b>Storage</b>	Store at -20°C Valid for 12 months. Avoid freeze / thaw cycles.
<b>Shipping</b>	Ice bag

### Background

Plays a major role in tight junction-specific obliteration of the intercellular space.

### For Research Use Only

Toll-free: 1-888-852-8623  
Web: [www.elabscience.com](http://www.elabscience.com)

Tel: 1-832-243-6086  
Email: [techsupport@elabscience.com](mailto:techsupport@elabscience.com)

Fax: 1-832-243-6017

Rev. V1.0