

P3H3 Polyclonal Antibody

catalog number: **E-AB-11362**

Note: Centrifuge before opening to ensure complete recovery of vial contents.

Description

Reactivity	Human;Mouse
Immunogen	Recombinant protein of human LEPREL2
Host	Rabbit
Isotype	IgG
Purification	Affinity purification
Buffer	Phosphate buffered solution, pH 7.4, containing 0.05% stabilizer and 50% glycerol.

Applications

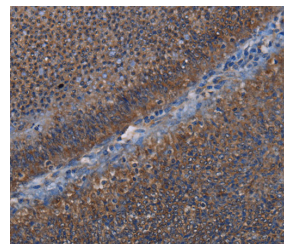
Recommended Dilution

WB	1:500-1:2000
IHC	1:50-1:200

Data

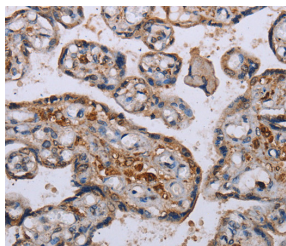


Western Blot analysis of A549 cell, Mouse heart tissue and Hela cell using P3H3 Polyclonal Antibody at dilution of 1:300



Immunohistochemistry of paraffin-embedded Human rectal cancer using P3H3 Polyclonal Antibody at dilution of 1:50

Calculated-MW:82 kDa



Immunohistochemistry of paraffin-embedded Human placenta using P3H3 Polyclonal Antibody at dilution of 1:50

Preparation & Storage

Storage	Store at -20°C Valid for 12 months. Avoid freeze / thaw cycles.
Shipping	The product is shipped with ice pack, upon receipt, store it immediately at the temperature recommended.

Background

The protein encoded by this gene belongs to the leprecan family of proteoglycans, which function as collagen prolyl hydroxylases that are required for proper collagen biosynthesis, folding and assembly. This protein, like other family members, is thought to reside in the endoplasmic reticulum. Epigenetic inactivation of this gene is associated with breast and other cancers, suggesting that it may function as a tumor suppressor.

For Research Use Only