

## Elab Fluor® 700 Anti-Mouse CD326/EpCAM Antibody[G8.8]

Catalog Number: E-AB-F1181M1

**Note:** Centrifuge before opening to ensure complete recovery of vial contents.

### Description

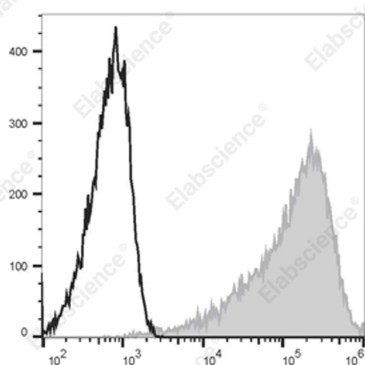
<b>Reactivity</b>	Mouse
<b>Host</b>	Rat
<b>Isotype</b>	Rat IgG2a, κ
<b>Clone No.</b>	G8.8
<b>Isotype Control</b>	Elab Fluor® 700 Rat IgG2a, κ Isotype Control[2A3] [Product E-AB-F09832M1]
<b>Conjugation</b>	Elab Fluor® 700
<b>Conjugation Information</b>	Elab Fluor® 700 is designed to be excited by the Red laser (627-640 nm) and detected using an optical filter centered near 719 nm (e.g., a 725/40 nm bandpass filter).
<b>Storage Buffer</b>	Phosphate buffered solution, pH 7.2, containing 0.09% stabilizer.

### Applications

### Recommended usage

<b>FCM</b>	Each lot of this antibody is quality control tested by flow cytometric analysis. <b>The amount of the reagent is suggested to be used 5 μL of antibody per test (million cells in 100 μL staining volume or per 100 μL of whole blood).</b> Please check your vial before the experiment. Since applications vary, the appropriate dilutions must be determined for individual use.
------------	---

### Data



Staining of 4T1 cells with Elab Fluor® 700 Anti-Mouse CD326/EpCAM Antibody[G8.8] (filled gray histogram) or Elab

Fluor® 700 Rat IgG2a, κ Isotype Control (empty black histogram). Total viable cells were used for analysis.

### Preparation & Storage

<b>Storage</b>	Keep as concentrated solution. This product can be stored at 2-8°C for 24 months. Please protected from prolonged exposure to light and do not freeze.
<b>Shipping</b>	Ice bag

### Antigen Information

<b>Alternate Names</b>	EGP314;Ep-CAM;EpCAM;Megp314;Tacstd1
<b>Uniprot ID</b>	Q99JW5
<b>Gene ID</b>	17075

### For Research Use Only

## Background

EpCAM (CD326) mediates calcium-independent homophilic cell to cell adhesion. It may also function as a growth factor receptor. It is thought to be involved in maintaining cells in position during proliferation. Expression of EpCAM seems to correlate inversely with the level of E-cadherin (CD324). EpCAM is considered important in tumor biology.