

CD146/MCAM Polyclonal Antibody

catalog number: D-AB-10421L

Note: Centrifuge before opening to ensure complete recovery of vial contents.

Description

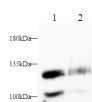
Reactivity	Human
Immunogen	Recombinant Human CD146/MCAM protein expressed by E.coli
Host	Rabbit
Isotype	IgG
Purification	Antigen Affinity Purification
Conjugation	Unconjugated
buffer	PBS with 0.05% proclin 300, 1% protective protein and 50% glycerol,pH7.4

Applications

Recommended Dilution

WB	1:500-1:1000
-----------	--------------

Data



Western blot with CD146/MCAM Polyclonal antibody at dilution of 1:1000.lane 1:Hela whole cell lysate,lane 2:A375 whole cell lysate.

Observed-MV:120 kDa

Calculated-MV:71 kDa

Preparation & Storage

Storage	Store at -20°C Valid for 12 months. Avoid freeze / thaw cycles.
Shipping	The product is shipped with ice pack,upon receipt,store it immediately at the temperature recommended.

Background

CD146,also known as melanoma cell adhesion molecule (MCAM) or MUC18,originally identified as a biomarker of melanoma progression,is a transmembrane glycoprotein of 113-130 kDa,belonging to the immunoglobulin (Ig) superfamily. Structurally,it consists of five Ig domains,a transmembrane domain,and a cytoplasmic region. In normal adult tissue,CD146 is primarily expressed by vascular endothelium and smooth muscle. CD146 is a key cell adhesion protein in vascular endothelial cell activity and angiogenesis,and has been used as marker of circulating endothelium cells (CECs). In addition to the membrane-anchored form of CD146,a soluble form of CD146 (sCD146,105 kDa) has also been found in human plasma and in the supernatant of cultured human endothelial cells. This antibody detects a band at approximately 120 kDa that corresponds to the molecular weight of glycosylated CD146. Treatment of lysates of HepG2 cells and L02 cells with PNGase F,which removes oligosaccharides from N-linked glycoproteins,led to a down-shift of the detected band.

For Research Use Only