

CPEB3 Polyclonal Antibody

catalog number: E-AB-65304

Note: Centrifuge before opening to ensure complete recovery of vial contents.

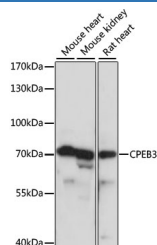
Description

Reactivity	Human;Mouse;Rat
Immunogen	Recombinant fusion protein of human CPEB3 (NP_055727.3).
Host	Rabbit
Isotype	IgG
Purification	Affinity purification
Buffer	Phosphate buffered solution, pH 7.4, containing 0.05% stabilizer and 50% glycerol.

Applications Recommended Dilution

WB	1:200-1:2000
-----------	--------------

Data



Western blot analysis of extracts of various cell lines using CPEB3 Polyclonal Antibody at dilution of 1:1000.

Observed-MW:75 kDa

Calculated-MW:74 kDa/76 kDa

Preparation & Storage

Storage	Store at -20°C Valid for 12 months. Avoid freeze / thaw cycles.
Shipping	The product is shipped with ice pack, upon receipt, store it immediately at the temperature recommended.

Background

CPEB3 (Cytoplasmic Polyadenylation Element Binding Protein 3) is a Protein Coding gene. Among its related pathways are Oocyte meiosis. Gene Ontology (GO) annotations related to this gene include nucleic acid binding and RNA binding. An important paralog of this gene is CPEB2.

For Research Use Only