

Recombinant Carboxypeptidase M Monoclonal Antibody

catalog number: **AN300393P**

Note: Centrifuge before opening to ensure complete recovery of vial contents.

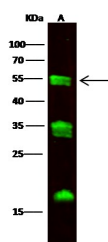
Description

Reactivity	Human
Immunogen	Recombinant Human Carboxypeptidase M/CPM Protein
Host	Rabbit
Isotype	IgG
Clone	12F8
Purification	Protein A
Buffer	0.2 µm filtered solution in PBS

Applications

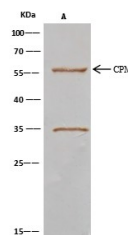
WB	1:500-1:2000
IP	1-4 µL/mg of lysate

Data



Western Blot with CPM Monoclonal Antibody at dilution of 1:500. Lane A: HepG2 Whole Cell Lysate, Lysates/proteins at 30 µg per lane.

Observed-MW:55 kDa
Calculated-MW:51 kDa



Immunoprecipitation analysis using 2 µL anti-CPM Monoclonal Antibody and 15 µl of 50 % Protein G agarose. Western blot was performed from the immunoprecipitate using CPM Monoclonal Antibody at a dilution of 1:100. Lane A:0.5 mg HepG2 Whole Cell Lysate

Observed-MW:55 kDa
Calculated-MW:51 kDa

Preparation & Storage

Storage	This antibody can be stored at 2°C-8°C for one month without detectable loss of activity. Antibody products are stable for twelve months from date of receipt when stored at -20°C to -80°C. Preservative-Free. Avoid repeated freeze-thaw cycles.
Shipping	Ice bag

Background

The protein encoded by this gene is a membrane-bound arginine/lysine carboxypeptidase. Its expression is associated with monocyte to macrophage differentiation. This encoded protein contains hydrophobic regions at the amino and carboxy termini and has 6 potential asparagine-linked glycosylation sites. The active site residues of carboxypeptidases A and B are conserved in this protein. Three alternatively spliced transcript variants encoding the same protein have been described for this gene.

For Research Use Only