

## Cystatin C Polyclonal Antibody(Capture/Detector)

catalog number: AN000020P

**Note:** Centrifuge before opening to ensure complete recovery of vial contents.

### Description

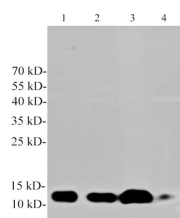
<b>Reactivity</b>	Human;Mouse;Rat
<b>Immunogen</b>	Recombinant Human Cystatin C protein expressed by E.coli
<b>Host</b>	Rabbit
<b>Isotype</b>	Rabbit IgG
<b>Purification</b>	Antigen Affinity Purification
<b>Conjugation</b>	Unconjugated
<b>Buffer</b>	Phosphate buffered solution, pH 7.2, containing 0.05% proclin 300.

### Applications

### Recommended Dilution

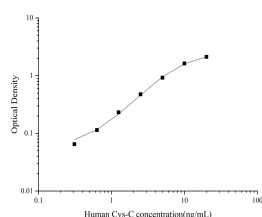
<b>WB</b>	1:1000-1:2000
<b>ELISA Capture</b>	2-8 µg/mL
<b>ELISA Detector</b>	0.1-0.4 µg/mL

### Data



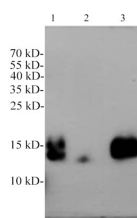
Western Blot with Cystatin C Polyclonal Antibody at dilution of 1:1000. Lane 1: HepG2 cell lysate, Lane 2: PC-3 cell lysate, Lane 3: CaCo2 cell lysate, Lane 4: Mouse kidney lysate.

**Observed-MV:13 kDa**  
**Calculated-MV:13 kDa**



Sandwich ELISA-Recombinant Human Cystatin C protein standard curve. Background subtracted standard curve using

Cystatin C antibody(AN000020P)(Capture), Cystatin C antibody(AN000020P)(Detector) in sandwich ELISA. The reference range value for Recombinant Human Cystatin C protein is 0.313-200 ng/mL.



Western Blot with Cystatin C Polyclonal Antibody at dilution of 1:1000. Lane 1: Rat kidney lysate, Lane 2: Rat liver lysate, Lane 3: Rat plasma.

**Observed-MV:13 kDa**  
**Calculated-MV:13 kDa**

### Preparation & Storage

### For Research Use Only

**Storage**

Store at 4°C valid for 12 months or -20°C valid for long term storage, avoid freeze / thaw cycles.

**Shipping**

The product is shipped with ice pack, upon receipt, store it immediately at the temperature recommended.

**Background**

Cystatin C is a member of family 2 of the Cystatin superfamily . It is involved in processes such as tumor invasion and metastasis, inflammation and some neurological diseases. It inhibits many cysteine proteases such as papain and cathepsins B, H, K, L, and S.