

Recombinant CD16/FCGR3 Monoclonal Antibody

catalog number: **AN300509P**

Note: Centrifuge before opening to ensure complete recovery of vial contents.

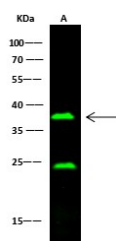
Description

Reactivity	Mouse
Immunogen	Recombinant Mouse CD16/FCGR3 protein
Host	Rabbit
Isotype	IgG
Clone	9C1
Purification	Protein A
Buffer	0.2 µm filtered solution in PBS

Applications Recommended Dilution

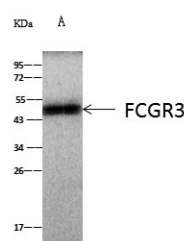
WB	1:500-1:2000
IP	0.5-2 µL/mg of lysate

Data



Western Blot with FCGR3 Monoclonal Antibody at dilution of 1:500. Lane A: C6 Whole Cell Lysate, Lysates/proteins at 30 µg per lane.

Observed-MW:38 kDa
Calculated-MW:29 kDa



Immunoprecipitation analysis using 4µL anti-mFCGR3 Monoclonal Antibody and 60 µg of Immunomagnetic beads Protein A/G. Western blot was performed from the immunoprecipitate using mFCGR3 Monoclonal Antibody at a dilution of 1:100. Lane A:0.5 mg RAW246.7 Whole Cell Lysate

Observed-MW:38 kDa
Calculated-MW:29 kDa

Preparation & Storage

Storage	This antibody can be stored at 2°C-8°C for one month without detectable loss of activity. Antibody products are stable for twelve months from date of receipt when stored at -20°C to -80°C. Preservative-Free. Avoid repeated freeze-thaw cycles.
Shipping	Ice bag

Background

Fc receptors bind the most common class of antibody, IgG, are called Fc gamma receptors (FcγR). FcγR is divided into three classes, Fc γ RI (CD64), Fc γ RII (CD32), and Fc γ RIII (CD16). CD16 protein is a multifunctional, low/intermediate affinity receptor, which belongs to the immunoglobulin superfamily. It is found on the surface of natural killer cells, neutrophil polymorphonuclear leukocytes, monocytes and macrophages. Mouse CD16 is encoded by a single gene, while, human CD16 is expressed as two distinct forms (CD16a/FcγRIIIa and CD16b/FcγRIIIb) encoded by two different highly homologous genes in a cell type-specific manner. CD16 is involved in phagocytosis, secretion of enzymes, inflammatory mediators, antibody-dependent cellular cytotoxicity (ADCC), and clearance of immune complexes.

For Research Use Only