

(KO Validated) EGFR Polyclonal Antibody

catalog number: E-AB-63241

Note: Centrifuge before opening to ensure complete recovery of vial contents.

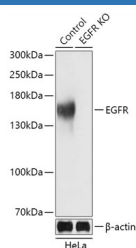
Description

Reactivity	Human;Mouse;Rat
Immunogen	A synthetic peptide of human EGFR (NP_005219.2).
Host	Rabbit
Isotype	IgG
Purification	Affinity purification
Buffer	Phosphate buffered solution, pH 7.4, containing 0.05% stabilizer and 50% glycerol.

Applications

WB	1:500-1:1000
-----------	--------------

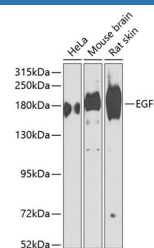
Data



Western blot analysis of extracts from normal (control) and EGFR knockout (KO) HeLa cells using EGFR Polyclonal Antibody at dilution of 1:3000.

Observed-MW:175 kDa

Calculated-MW:44 kDa/69 kDa/77 kDa/134 kDa



Western blot analysis of extracts of various cell lines using EGFR Polyclonal Antibody at dilution of 1:1000.

Observed-MW:175 kDa

Calculated-MW:44 kDa/69 kDa/77 kDa/134 kDa

Preparation & Storage

Storage	Store at -20°C Valid for 12 months. Avoid freeze / thaw cycles.
Shipping	The product is shipped with ice pack, upon receipt, store it immediately at the temperature recommended.

Background

The protein encoded by this gene is a transmembrane glycoprotein that is a member of the protein kinase superfamily. This protein is a receptor for members of the epidermal growth factor family. EGFR is a cell surface protein that binds to epidermal growth factor. Binding of the protein to a ligand induces receptor dimerization and tyrosine autophosphorylation and leads to cell proliferation. Mutations in this gene are associated with lung cancer.

For Research Use Only