

## PACSIN1 Polyclonal Antibody

**catalog number: E-AB-66596**

**Note:** Centrifuge before opening to ensure complete recovery of vial contents.

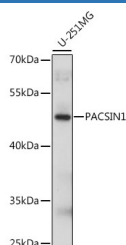
### Description

<b>Reactivity</b>	Human
<b>Immunogen</b>	Recombinant fusion protein of human PACSIN1 (NP_065855.1).
<b>Host</b>	Rabbit
<b>Isotype</b>	IgG
<b>Purification</b>	Affinity purification
<b>Buffer</b>	Phosphate buffered solution, pH 7.4, containing 0.05% stabilizer and 50% glycerol.

### Applications

<b>WB</b>	1:500-1:2000
-----------	--------------

### Data



Western blot analysis of extracts of U-251MG cells using PACSIN1 Polyclonal Antibody at dilution of 1:1000.

**Observed-MV:51 kDa**

**Calculated-MV:50 kDa**

### Preparation & Storage

<b>Storage</b>	Store at -20°C Valid for 12 months. Avoid freeze / thaw cycles.
<b>Shipping</b>	The product is shipped with ice pack, upon receipt, store it immediately at the temperature recommended.

### Background

PACSIN1 (Protein Kinase C And Casein Kinase Substrate In Neurons 1) is a Protein Coding gene. Diseases associated with PACSIN1 include Autosomal Recessive Non-Syndromic Intellectual Disability. Among its related pathways are Vesicle-mediated transport and Clathrin-mediated endocytosis. Gene Ontology (GO) annotations related to this gene include phospholipid binding and cytoskeletal protein binding. An important paralog of this gene is PACSIN2.

### For Research Use Only