

Recombinant Lactate Dehydrogenase A Monoclonal Antibody

catalog number: E-AB-81451

Note: Centrifuge before opening to ensure complete recovery of vial contents.

Description

Reactivity	Human;Rat
Immunogen	A synthetic peptide of human Lactate Dehydrogenase
Host	Rabbit
Isotype	IgG
Clone	R09-9A7
Purification	Affinity Purified
Buffer	50mM Tris-Glycine(pH 7.4), 0.15M NaCl, 40% Glycerol, 0.05% stabilizer and 0.05% protective protein.

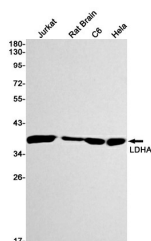
Applications

WB

Recommended Dilution

1:1000-1:2000

Data



Western blot detection of LDHA in Jurkat,Rat Brain,C6,HeLa cell lysates using LDHA Rabbit mAb(1:1000 diluted).Predicted band size:37kDa.Observed band size:37kDa.

Observed-MV:37 kDa

Calculated-MV:37 kDa

Preparation & Storage

Storage

Store at -20°C Valid for 12 months. Avoid freeze / thaw cycles.

Shipping

The product is shipped with ice pack,upon receipt,store it immediately at the temperature recommended.

Background

LDHA,also named as LDH-M and NY-REN-59,is an enzyme which catalyzes the inter-conversion of pyruvate and L-lactate with concomitant inter-conversion of NADH and NAD⁺. LDHA is found in most somatic tissues,though predominantly in muscle tissue and tumours,and belongs to the lactate dehydrogenase family. It has long been known that many human cancers have higher LDHA levels compared to normal tissues. It has also been shown that LDHA plays an important role in the development,invasion and metastasis of malignancies. Mutations in LDHA have been linked to exertional myoglobinuria. LDHA has some isoforms with MW 26-40 kDa.

For Research Use Only