

# Purified Anti-Human CD62L Antibody[DREG56]

catalog number: E-AB-F1051A

**Note:** Centrifuge before opening to ensure complete recovery of vial contents.

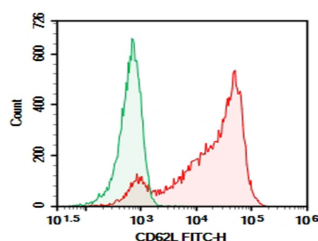
## Description

<b>Reactivity</b>	Human
<b>Host</b>	Mouse
<b>Isotype</b>	Mouse IgG1, $\kappa$
<b>Clone</b>	DREG56
<b>Conjugation</b>	Unconjugated
<b>buffer</b>	Phosphate-buffered solution, pH 7.2, containing 0.05% non-protein stabilizer. Dialyze to completely remove the stabilizer prior to labeling.

## Applications Recommended Dilution

<b>FCM</b>	2 $\mu\text{g/mL}$ ( $1 \times 10^5$ - $5 \times 10^5$ cells)
------------	---

## Data



Human peripheral blood lymphocytes were stained with 0.2  $\mu\text{g}$  Purified Anti-Human CD62L Antibody[DREG56] (Right) and 0.2  $\mu\text{g}$  Mouse IgG1,  $\kappa$  Isotype Control (Left), followed by FITC-conjugated Goat Anti-Mouse IgG Secondary Antibody.

## Preparation & Storage

<b>Storage</b>	Store at 4°C valid for 12 months or -20°C valid for long term storage, avoid freeze / thaw cycles.
<b>Shipping</b>	Ice bag

## Background

CD62L is a 74-95 kD glycoprotein also known as L-selectin, LECAM-1, Ly-22, LAM-1, and MEL-14. It is a member of the selectin family and is expressed on the majority of B and naive T cells, a subset of memory T cells, monocytes, granulocytes, most thymocytes, and a subset of NK cells. CD62L is important in lymphocyte homing to high endothelial venules (HEV) in peripheral lymph nodes and leukocyte 'rolling' on activated endothelium. CD62L also contributes to neutrophil emigration at inflammatory sites. CD62L is rapidly shed from lymphocytes and neutrophils upon cellular activation and the expression levels of CD62L (in conjunction with other markers) have been used to distinguish naive, effector, and memory T cells. CD62L has been reported to interact with CD34, GlyCAM-1, and MAdCAM-1.

## For Research Use Only