

Recombinant Human Choriogonadotropin Subunit Beta 3/CGB3 Protein (His Tag)

Catalog Number: PKSH032251

Note: Centrifuge before opening to ensure complete recovery of vial contents.

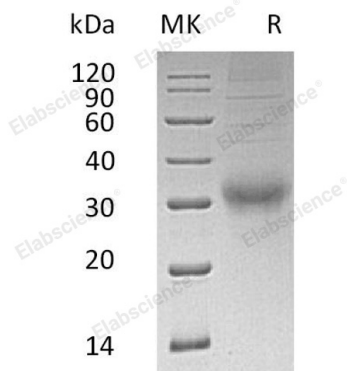
Description

Species	Human
Source	HEK293 Cells-derived Human CGB3 protein Ser21-Gln165, with an C-terminal His
Calculated MW	16.7 kDa
Observed MW	28-35 kDa
Accession	P0DN86
Bio-activity	Not validated for activity

Properties

Purity	> 95 % as determined by reducing SDS-PAGE.
Endotoxin	< 1.0 EU per µg of the protein as determined by the LAL method.
Storage	Generally, lyophilized proteins are stable for up to 12 months when stored at -20 to -80 °C. Reconstituted protein solution can be stored at 4-8°C for 2-7 days. Aliquots of reconstituted samples are stable at < -20°C for 3 months.
Shipping	This product is provided as lyophilized powder which is shipped with ice packs.
Formulation	Lyophilized from a 0.2 µm filtered solution of 20mM PB, 150mM NaCl, pH 7.4. Normally 5% - 8% trehalose, mannitol and 0.01% Tween 80 are added as protectants before lyophilization.
Reconstitution	Please refer to the specific buffer information in the printed manual. Please refer to the printed manual for detailed information.

Data



> 95 % as determined by reducing SDS-PAGE.

Background

Choriogonadotropin subunit beta is also known as CG-beta, Chorionic gonadotrophin chain beta. It is a protein that in humans is encoded by the CGB gene. It belongs to the glycoprotein hormones subunit beta family. Choriogonadotropin subunit beta can stimulates the ovaries to synthesize the steroids that are essential for the maintenance of pregnancy.

For Research Use Only

Toll-free: 1-888-852-8623
Web: www.elabscience.com

Tel: 1-832-243-6086
Email: techsupport@elabscience.com

Fax: 1-832-243-6017