

Recombinant CD13/ANPEP Monoclonal Antibody

catalog number: **AN300455P**

Note: Centrifuge before opening to ensure complete recovery of vial contents.

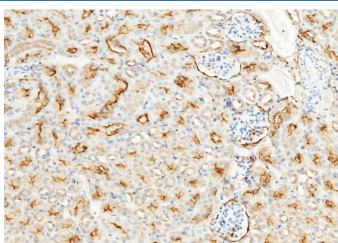
Description

Reactivity	Mouse
Immunogen	Recombinant Mouse ANPEP protein
Host	Rabbit
Isotype	IgG
Clone	7B4
Purification	Protein A
Buffer	0.2 µm filtered solution in PBS

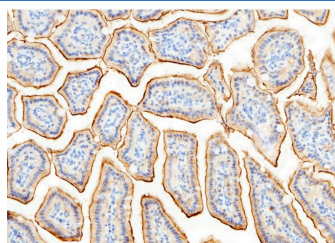
Applications Recommended Dilution

IHC-P	1:100-1:500
--------------	-------------

Data



Immunohistochemistry of paraffin-embedded mouse kidney using CD13/ANPEP Monoclonal Antibody at dilution of 1:300.



Immunohistochemistry of paraffin-embedded mouse intestines using CD13/ANPEP Monoclonal Antibody at dilution of 1:300.

Preparation & Storage

Storage	This antibody can be stored at 2°C-8°C for one month without detectable loss of activity. Antibody products are stable for twelve months from date of receipt when stored at -20°C to -80°C. Preservative-Free. Avoid repeated freeze-thaw cycles.
Shipping	Ice bag

Background

Aminopeptidase N (ANPEP or APN), also known as CD13, is a cell-surface metalloprotease located in the small-intestinal and renal microvillar membrane, as well as other plasma membranes. It belongs to the peptidase M1 family. CD13 plays a role in the final digestion of peptides generated from hydrolysis of proteins by gastric and pancreatic proteases and is involved in the metabolism of regulatory peptides by diverse cell types. CD13/APN is a potent regulator of angiogenesis which is essential for tumor invasion and metastasis, and its transcription in activated endothelial cells is induced by angiogenic growth factors via the RAS/MAPK pathway. In addition, this enzyme has been shown to participate in antigen processing and presentation, and accordingly, defects in this gene appear to be a cause of various types of leukemia or lymphoma and carcinomas.

For Research Use Only

Toll-free: 1-888-852-8623
Web: www.elabscience.com

Tel: 1-832-243-6086
Email: techsupport@elabscience.com

Fax: 1-832-243-6017

Rev. V1.0