

Recombinant Integrin β3 Monoclonal Antibody

catalog number: **AN300876L**

Note: Centrifuge before opening to ensure complete recovery of vial contents.

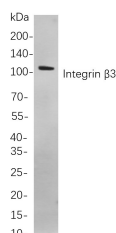
Description

Reactivity	Human;Mouse;Rat
Immunogen	Recombinant Human Integrin β3 protein
Host	Rabbit
Isotype	IgG,k
Clone	B823
Purification	Protein A
Buffer	PBS, 50% glycerol, 0.05% Proclin 300, 0.05% protein protectant.

Applications Recommended Dilution

IHC	1:1000-1:4000
WB	1:500-1:2000
IF	1:200-1:1000
ELISA	1:5000-1:20000
IP	1:50-1:200

Data



Western Blot with Recombinant Integrin β3 Monoclonal Antibody at dilution of 1:1000 dilution. Lane A: Mouse spleen cells.

Observed-MW:100 kDa

Calculated-MW:87 kDa

Preparation & Storage

Storage	Store at -20°C Valid for 12 months. Avoid freeze / thaw cycles.
Shipping	Ice bag

Background

ITGB3(integrin subunit beta 3) Homo sapiens The ITGB3 protein product is the integrin beta chain beta 3. Integrins are integral cell-surface proteins composed of an alpha chain and a beta chain. A given chain may combine with multiple partners resulting in different integrins. Integrin beta 3 is found along with the alpha IIb chain in platelets. Integrins are known to participate in cell adhesion as well as cell-surface mediated signalling.

For Research Use Only