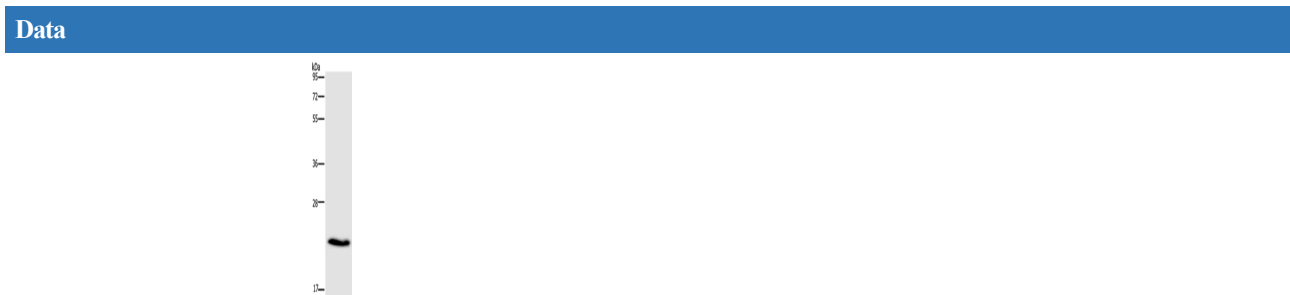


CMTM5 Polyclonal Antibody

catalog number: E-AB-15668

Note: Centrifuge before opening to ensure complete recovery of vial contents.

| Description | |
|--------------|--|
| Reactivity | Human;Mouse |
| Immunogen | Synthetic peptide of human CMTM5 |
| Host | Rabbit |
| Isotype | IgG |
| Purification | Affinity purification |
| Conjugation | Unconjugated |
| Buffer | Phosphate buffered solution, pH 7.4, containing 0.05% stabilizer and 50% glycerol. |
| Applications | Recommended Dilution |
| WB | 1:500-1:2000 |



| Preparation & Storage | |
|-----------------------|--|
| Storage | Store at -20°C Valid for 12 months. Avoid freeze / thaw cycles. |
| Shipping | The product is shipped with ice pack, upon receipt, store it immediately at the temperature recommended. |

Background

This gene belongs to the chemokine-like factor gene superfamily. This family of genes encodes multi-pass membrane proteins that are similar to both the chemokine and the transmembrane 4 superfamilies of signaling molecules. Alternate transcriptional splice variants of this gene, encoding different isoforms, have been characterized. Highly expressed in the brain.