

## Recombinant Rat Cadherin-8/CDH8 Protein

**Catalog Number:** PKSR030267

**Note:** Centrifuge before opening to ensure complete recovery of vial contents.

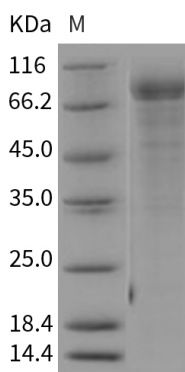
### Description

<b>Species</b>	Rat
<b>Source</b>	HEK293 Cells-derived Rat Cadherin-8/CDH8 protein Met1-Met621
<b>Calculated MW</b>	65.9 kDa
<b>Observed MW</b>	76-85 kDa
<b>Accession</b>	NP_445845.2
<b>Bio-activity</b>	Not validated for activity

### Properties

<b>Purity</b>	> 80 % as determined by reducing SDS-PAGE.
<b>Endotoxin</b>	< 1.0 EU per µg of the protein as determined by the LAL method.
<b>Storage</b>	Generally, lyophilized proteins are stable for up to 12 months when stored at -20 to -80°C. Reconstituted protein solution can be stored at 4-8°C for 2-7 days. Aliquots of reconstituted samples are stable at < -20°C for 3 months.
<b>Shipping</b>	This product is provided as lyophilized powder which is shipped with ice packs.
<b>Formulation</b>	Lyophilized from sterile PBS, pH 7.4 Normally 5% - 8% trehalose, mannitol and 0.01% Tween 80 are added as protectants before lyophilization.
<b>Reconstitution</b>	Please refer to the specific buffer information in the printed manual. Please refer to the printed manual for detailed information.

### Data



> 80 % as determined by reducing SDS-PAGE.

### Background

#### For Research Use Only

Toll-free: 1-888-852-8623  
Web: [www.elabscience.com](http://www.elabscience.com)

Tel: 1-832-243-6086  
Email: [techsupport@elabscience.com](mailto:techsupport@elabscience.com)

Fax: 1-832-243-6017

Cadherins are integral membrane proteins that mediate calcium-dependent cell-cell adhesion. Type I cadherin proteins are composed of a large N-terminal extracellular domain, a single membrane-spanning domain, and a small, highly conserved C-terminal cytoplasmic domain. The extracellular domain consists of five subdomains, each containing a cadherin motif, and appears to determine the specificity of the protein's homophilic cell adhesion activity. Type II (atypical) cadherins are defined based on their lack of a HAV cell adhesion recognition sequence specific to type I cadherins. Cadherin 8, also known as CDH 8, is a type II classical cadherin belonging to the cadherin superfamily. As mainly expressed in brain, CDH8 is found in certain nerve cell lines, such as retinoblasts, glioma cells and neuroblasts, and is putatively involved in synaptic adhesion, axon outgrowth and guidance. Human Cadherin 8 is a 799 amino acid single-pass type I transmembrane protein with a putative 29 aa signal sequence, and a 32 aa propeptide, a 560 aa mature extracellular domain, a 21 aa transmembrane domain and a 157 aa cytoplasmic domain. The human, mouse and rat proteins share approximately 98% homology.

## For Research Use Only

Toll-free: 1-888-852-8623  
Web: [www.elabscience.com](http://www.elabscience.com)

Tel: 1-832-243-6086  
Email: [techsupport@elabscience.com](mailto:techsupport@elabscience.com)

Fax: 1-832-243-6017