

## Recombinant Human CD160/BY55 Protein (Fc Tag)

**Catalog Number:** PKSH033730

**Note:** Centrifuge before opening to ensure complete recovery of vial contents.

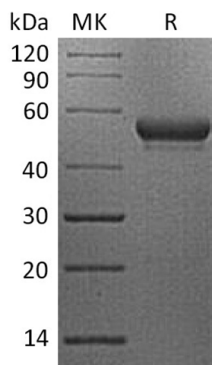
### Description

<b>Species</b>	Human
<b>Source</b>	HEK293 Cells-derived Human CD160;BY55 protein Ile27-Ser159, with an C-terminal Fc
<b>Calculated MW</b>	42 kDa
<b>Observed MW</b>	50-60 kDa
<b>Accession</b>	O95971
<b>Bio-activity</b>	Not validated for activity

### Properties

<b>Purity</b>	> 95 % as determined by reducing SDS-PAGE.
<b>Endotoxin</b>	< 1.0 EU per µg of the protein as determined by the LAL method.
<b>Storage</b>	Generally, lyophilized proteins are stable for up to 12 months when stored at -20 to -80°C. Reconstituted protein solution can be stored at 4-8°C for 2-7 days. Aliquots of reconstituted samples are stable at < -20°C for 3 months.
<b>Shipping</b>	This product is provided as lyophilized powder which is shipped with ice packs.
<b>Formulation</b>	Lyophilized from a 0.2 µm filtered solution of PBS, pH 7.4. Normally 5% - 8% trehalose, mannitol and 0.01% Tween 80 are added as protectants before lyophilization. Please refer to the specific buffer information in the printed manual.
<b>Reconstitution</b>	Please refer to the printed manual for detailed information.

### Data



> 95 % as determined by reducing SDS-PAGE.

### Background

CD160 antigen is a Lipid-anchor that exists as a disulfide-linked homomultimer. CD160 contains one Ig-like V-type domain. The human CD160 precursor is a cysteine-rich; glycosylphosphatidylinositol-anchored protein of 181 amino acids with a single Ig-like domain. It is weakly homologous to KIR2DL4. CD160 is expressed in the spleen; peripheral blood; and small intestine. Its expression is tightly associated with peripheral blood NK cells and CD8 T lymphocytes with cytolytic effector activity. CD160 is a receptor showing broad specificity for both classical and non-classical MHC class I molecules.

### For Research Use Only

Toll-free: 1-888-852-8623  
Web: [www.elabscience.com](http://www.elabscience.com)

Tel: 1-832-243-6086  
Email: [techsupport@elabscience.com](mailto:techsupport@elabscience.com)

Fax: 1-832-243-6017